



Materials

Cartridge:

Weight: 0.09 kg. (0.20 lbs.)
Steel with hardened work surfaces.
Zinc-plated exposed surfaces.
Buna N O-rings and back-ups standard.

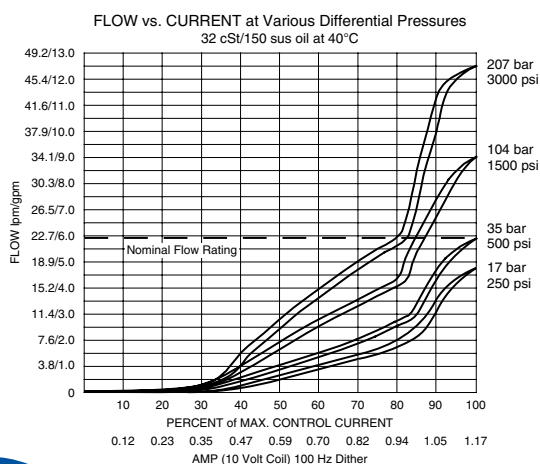
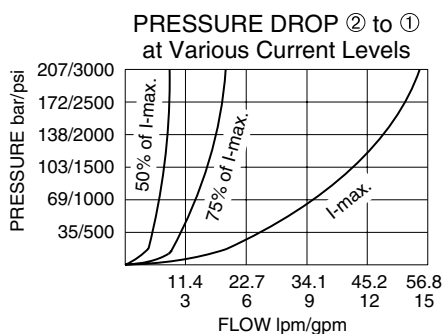
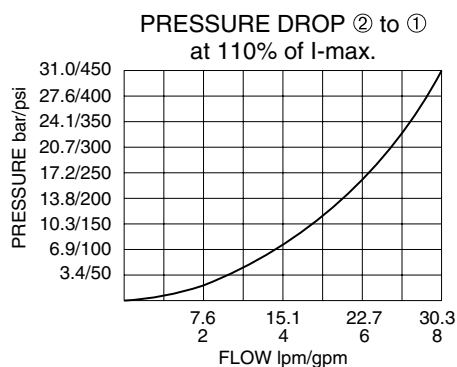
Standard Ported Body:

Weight: 0.16 kg. (0.35 lbs.)
Anodized high-strength 6061 T6 aluminum alloy, rated to 207 bar (3000 psi).
Ductile iron bodies available;
dimensions may differ;

Standard Coil:

Weight: 0.11 kg. (0.25 lbs.)
Unitized thermoplastic encapsulated.

Performance



SP08-20

2 Way, Normally Closed, 207 BAR Rated

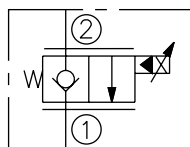
A proportional solenoid-operated, two-way, poppet-type, normally closed, screw-in hydraulic cartridge valve for low-leakage blocking and load-holding applications.

Voltage	Hydraforce code	Article no.	Price £	Price €
CARTRIDGE VERSION				
24V DC	SP08-20-0-N-24DG	SP0820C24	£111.00	€132.20
INLINE WITH BODY 1/4" BSP				
24V DC	SP08-20-2B-N-24DG	SP0820B24	£136.30	€163.60
INLINE WITH BODY 3/8" BSP				
24V DC	SP08-20-3B-N-24DG	SP0820B24	£136.30	€163.60
with nitril seals				
WITH 'G' DIN CONNECTOR PLUG				

On request - Viton Seals - Screen filter protection - Manual Override
On request - For DC coils with spade or push on connections

Symbols

USASI/ISO:



Dimensions

