

SP10-20

2 Way, Normally Open, 207 BAR Rated

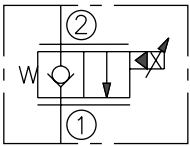
A proportional solenoid-operated, two-way, poppet-type, normally closed, screw-in hydraulic cartridge valve for low-leakage blocking and load-holding applications.

Voltage	Hydraforce code	Article no.	Price £	Price €
CARTRIDGE VERSION				
24V DC	SP10-20-0-N-24DG	SP1020C24	£121.60	€145.20
INLINE WITH BODY 1/4" BSP				
24V DC	SP10-20-2B-N-24DG	SP1020B24	£149.40	€179.20
INLINE WITH BODY 3/8" BSP				
24V DC	SP10-20-3B-N-24DG	SP1020B24	£149.40	€179.20
INLINE WITH BODY 1/2" BSP				
24V DC	SP10-20-4B-N-24DG	SP1020B24	£149.40	€179.20
with nitril seals				
WITH 'G' DIN CONNECTOR PLUG				

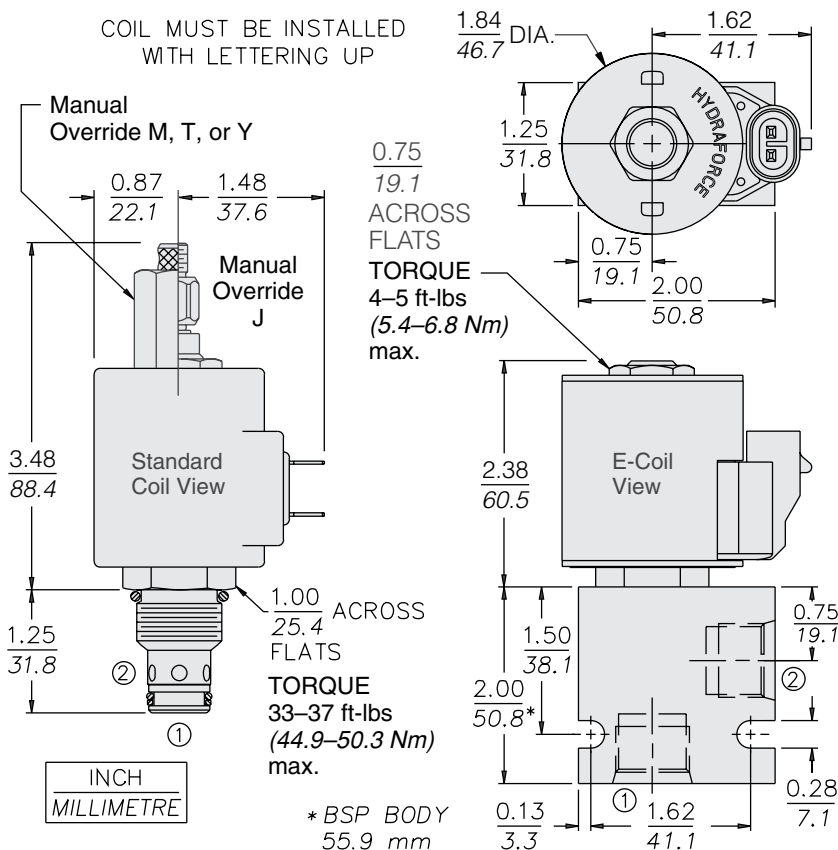
On request - Viton Seals - Screen filter protection - Manual Override
On request - For DC coils with spade or push on connections

Symbols

USASI/ISO:



Dimensions



Materials

Cartridge:

Weight: 0.16 kg. (0.34 lbs.)
Steel with hardened work surfaces. Zinc-plated exposed surfaces.
Buna N O-rings and back-ups standard.

Standard Ported Body:

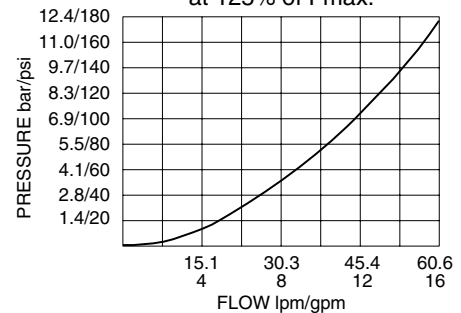
Weight: 0.16 kg. (0.35 lbs.)
Anodized high-strength 6061 T6 aluminum alloy, rated to 207 bar (3000 psi).
Ductile iron bodies available; dimensions may differ.

Standard Coil:

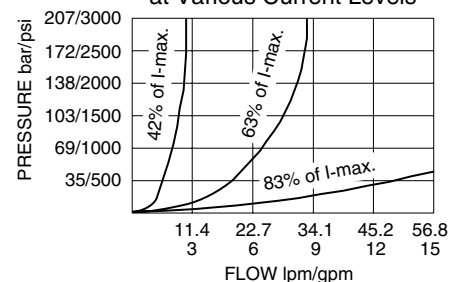
Weight: 0.27 kg. (0.60 lbs.)
Unitized thermoplastic encapsulated.

Performance

PRESSURE DROP ② to ① at 125% of I-max.



PRESSURE DROP ② to ① at Various Current Levels



FLOW vs. CURRENT at Various Differential Pressures

