



## SP08-47C

### 4 Way, 3 Position, Closed Center, 207 BAR Rated

A proportional solenoid-operated, four-way, three-position, spool-type, closed center, screw-in hydraulic cartridge valve.

### Materials

#### Cartridge:

Weight: 0.13 kg. (0.28 lbs.)  
Steel with hardened work surfaces.  
Zinc-plated exposed surfaces.  
Buna N O-rings and back-ups std.

#### Standard Ported Body:

Weight: 0.18 kg. (0.40 lbs.)  
Anodized highstrength 6061 T6 aluminum alloy, rated to 207 bar (3000 psi).  
Ductile iron bodies available; dimensions may differ.

#### Standard Coil: 2 Required.

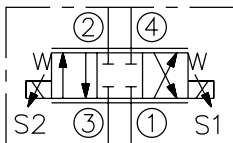
Weight each: 0.11 kg. (0.25 lbs.)  
Unitized thermoplastic encapsulated.

| Voltage                            | Hydraforce code    | Article no.        | Price £        | Price €        |
|------------------------------------|--------------------|--------------------|----------------|----------------|
| <b>CARTRIDGE VERSION</b>           |                    |                    |                |                |
| 24V DC                             | SP08-47C-0-N-24DG  | <b>SP0847CC24</b>  | <b>£152.70</b> | <b>€183.20</b> |
| <b>INLINE WITH BODY 1/4" BSP</b>   |                    |                    |                |                |
| 24V DC                             | SP08-47C-2B-N-24DG | <b>SP0847C2B24</b> | <b>£194.50</b> | <b>€233.30</b> |
| <b>INLINE WITH BODY 3/8" BSP</b>   |                    |                    |                |                |
| 24V DC                             | SP08-47C-2B-N-24DG | <b>SP0847C3B24</b> | <b>£194.50</b> | <b>€233.30</b> |
| <b>with nitril seals</b>           |                    |                    |                |                |
| <b>WITH 'G' DIN CONNECTOR PLUG</b> |                    |                    |                |                |

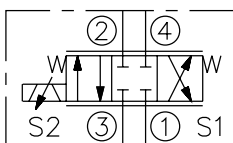
On request - Viton Seals - Screen filter protection - Manual Override  
On request - For DC coils with spade or push on connections

### Symbols

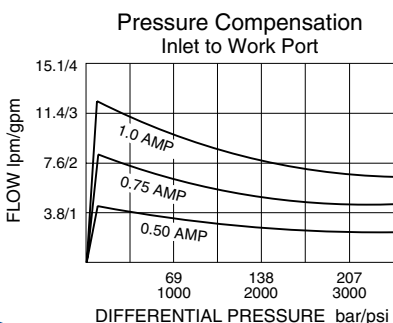
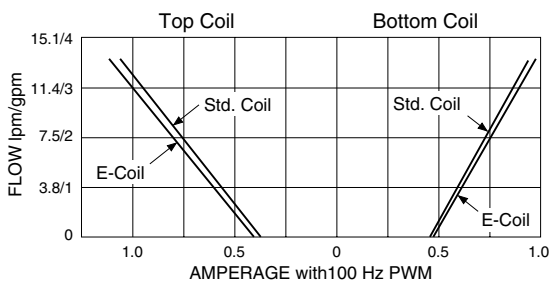
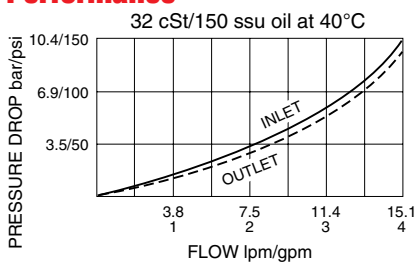
#### USASI:



#### ISO:



### Performance



### Dimensions

