

PV72-21

Proportional Flow Control Cartridge, Normally Open 207 BAR Rated

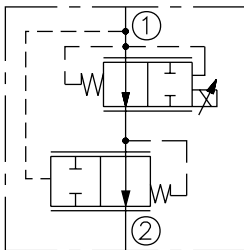
A solenoid operated, electrically-variable, two-port, pressure-compensated, spooltype, normally open when de-energized, proportional flow control valve.

Voltage	Hydraforce code	Article no.	Price £	Price €
CARTRIDGE VERSION				
24V DC	PV72-21-10T-N-24DG	PV7221C24	£256.60	€308.00
INLINE WITH BODY SAE10				
24V DC	PV72-21-10T-N-24DG	PV722110T24	£325.20	€390.20
INLINE WITH BODY SAE12				
24V DC	PV72-21-12T-N-24DG	PV722112T24	£325.20	€390.20
INLINE WITH BODY SAE16				
24V DC	PV72-21-16T-N-24DG	PV722116T24	£325.20	€390.20
with nitril seals				
WITH 'G' DIN CONNECTOR PLUG				

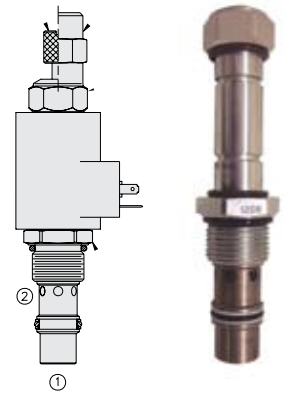
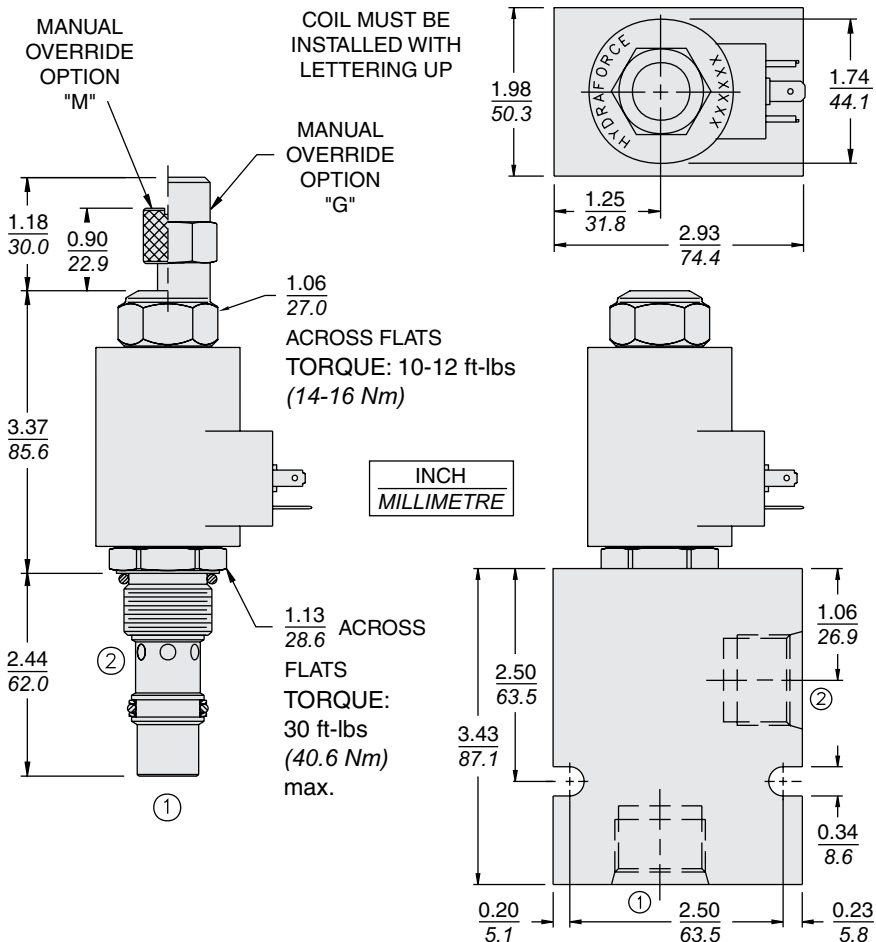
On request - Viton Seals - Screen filter protection - Manual Override
On request - For DC coils with spade or push on connections

Symbols

USASI/ISO:



Dimensions



HYDRAFORCE

Materials

Cartridge:

Weight: 0.32 kg. (0.7 lbs.)
Steel with hardened work surfaces.
Zinc-plated exposed surfaces.
Buna N O-rings and polyester elastomer back-ups standard.

Standard Ported Body:

Weight: 0.59 kg. (1.3 lbs.)
Anodized highstrength 6061 T6 aluminum alloy, rated to 207 bar (3000 psi).
Ductile iron bodies available; dimensions may differ.

70-Size "D" Coil:

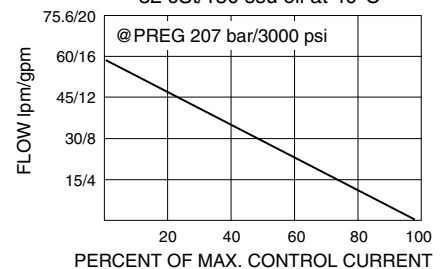
Weight: 0.32 kg. (0.7 lbs.)
Unitized thermoplastic encapsulated.

70-Size "E" Coil:

Weight: 0.41 kg. (0.9 lbs.)
Fully encapsulated with rugged external metal shell.
IP69K rated.

Performance

Flow vs. Current
Input Pressure: 240 bar/3500 psi
12V Coil; 110 Hz PWM
32 cSt/150 ssu oil at 40°C



Regulated Flow vs. Pressure Drop
Input Pressure: 240 bar/3500 psi
12V Coil; 110 Hz PWM
32 cSt/150 ssu oil at 40°C

