

## PV72-30

### Proportional Flow Control Cartridge, Normally Closed 207 BAR Rated

A solenoid-operated, electrically-variable, three-port, pressure-compensated, spooltype, normally closed when de-energized, proportional flow control valve. It can be used as a priority-type flow regulator with pressure-compensated, regulated and bypass flow. It can also be used as a restrictive-type 2-way, pressure-compensated flow regulator when the bypass line (port ②) is blocked.

### Materials

#### Cartridge:

Weight: 0.36 kg. (0.80 lbs.)  
Steel with hardened work surfaces.  
Zinc-plated exposed surfaces.  
Buna N O-rings and polyester elastomer back-ups standard.

#### Standard Ported Body:

Weight: 1.09 kg. (2.4 lbs.)  
Anodized highstrength 6061 T6 aluminum alloy, rated to 207 bar (3000 psi).  
Ductile iron bodies available; dimensions may differ.

#### 70-Size "D" Coil:

Weight: 0.32 kg. (0.7 lbs.)  
Unitized thermoplastic encapsulated,  
Class H high temperature magnet-wire.

#### 70-Size "E" Coil:

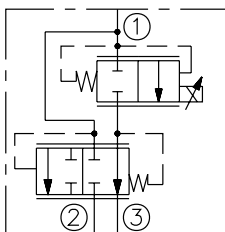
Weight: 0.41 kg. (0.9 lbs.)  
Fully encapsulated with rugged external  
metal shell.  
IP69K rated.

Voltage	Hydraforce code	Article no.	Price £	Price €
<b>CARTRIDGE FLOW VERSION A</b>				
24V DC	PV72-30A-0-N-24DG	<b>PV7230AC24</b>	<b>£266.30</b>	<b>€319.60</b>
<b>CARTRIDGE FLOW VERSION B</b>				
24V DC	PV72-30B-0-N-24DG	<b>PV7230BC24</b>	<b>£266.30</b>	<b>€319.60</b>
<b>INLINE WITH BODY 1/2" BSP FLOW VERSION A</b>				
24V DC	PV72-30A-4B-N-24DG	<b>PV7230A4B24</b>	<b>£342.30</b>	<b>€410.80</b>
<b>INLINE WITH BODY 1/2" BSP FLOW VERSION B</b>				
24V DC	PV72-30B-4B-N-24DG	<b>PV7230B4B24</b>	<b>£342.30</b>	<b>€410.80</b>
<b>with nitril seals</b>				
<b>WITH 'G' DIN CONNECTOR PLUG</b>				

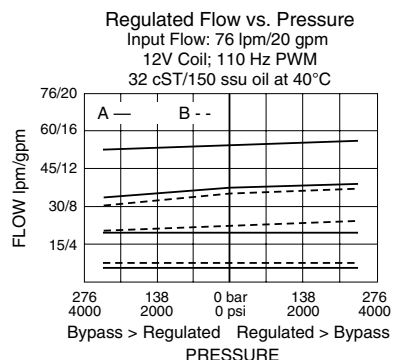
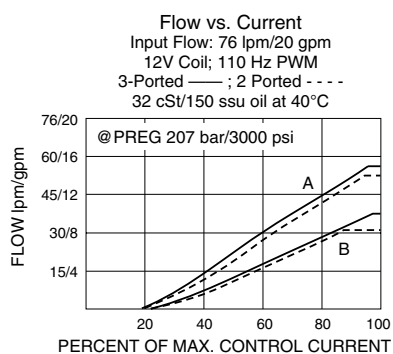
On request - Viton Seals - Screen filter protection - Manual Override  
On request - For DC coils with spade or push on connections

### Symbols

#### USASI/ISO:



### Performance



### Dimensions

