

CV10-20

Check Valve, 240 BAR Rated

A screw-in, cartridge-style, hydraulic check valve for use as a blocking or load-holding device.

Materials

Cartridge:

Weight: 0.08 kg. (0.17 lbs.)
Steel with hardened work surfaces.
Zinc-plated exposed surfaces.
Buna N O-rings and polyester elastomer back-ups standard.

Standard Ported Body:

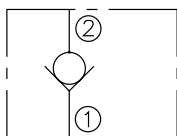
Weight: 0.16 kg. (0.35 lbs.)
Anodized highstrength 6061 T6 aluminum alloy, rated to 207 bar (3000 psi).
Ductile iron bodies available; dimensions may differ.

Porting	Hydraforce code	Article no.	Spring Options	Price £	Price €
Cartridge Version	CV10-20-0-N-*	CV1020C*	* suffix with 5 = 0.34 Bar (5 PSI)	£17.10	€20.60
INLINE 1/4" BSP	CV10-20-2B-N-*	CV10202B*	15 = 1 BAR (15 PSI) 30 = 2.1 BAR (30 PSI) 40 = 2.8 BAR (40 PSI)	£45.50	€54.50
INLINE 3/8" BSP	CV10-20-3B-N-*	CV10203B*	70 = 4.8 BAR (70 PSI) 100 = 6.9 BAR (100 PSI)	£45.50	€54.50
INLINE 1/2" BSP	CV10-20-4B-N-*	CV10204B*	200 = 13.6 BAR (200 PSI) 300 = 20.4 BAR (300 PSI)	£45.50	€54.50

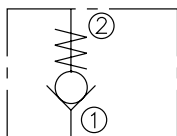
with nitril seals / Viton on request

Symbols

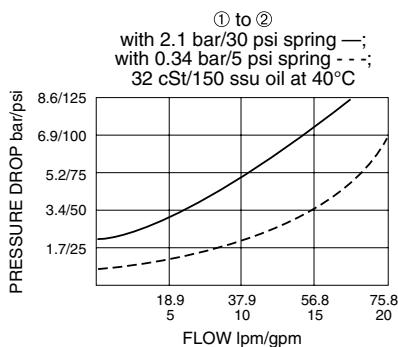
USASI:



ISO:



Performance



Dimensions

