

## PC08-30

### Check Valve, Pilot-to-Open, 207 BAR Rated

A screw-in, cartridge-style, pilot-operated, hydraulic check valve for use in blocking or load-holding circuits.

Porting	Hydraforce code	Article no.	Bias Spring Options	Price £	Price €
Cartridge Version	PC08-30-0-N*	<b>PC08300C*</b>	<b>leave blank for</b> 1.72 BAR (25 PSI) * suffix with 70 = 4.8 BAR (70 PSI) 90 = 6.2 BAR (90 PSI) 120 = 8.2 BAR (120 PSI) 270 = 18.3 BAR (270 PSI)	<b>£35.80</b>	<b>€42.90</b>
INLINE 3/8" BSP	PC08-30-3B-N*	<b>PC08303B*</b>		<b>£70.00</b>	<b>€84.00</b>

with nitril seals / Viton on request

### Materials

#### Cartridge:

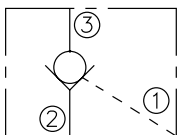
Weight: 0.08 kg. (0.18 lbs.)  
Steel with hardened work surfaces.  
Zinc-plated exposed surfaces.  
Buna N O-rings and back-ups standard.

#### Standard Ported Body:

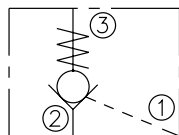
Weight: 0.27 kg. (0.60 lbs.)  
Anodized highstrength 6061 T6 aluminum alloy, rated to 207 bar (3000 psi).  
Ductile iron bodies available; dimensions may differ.

### Symbols

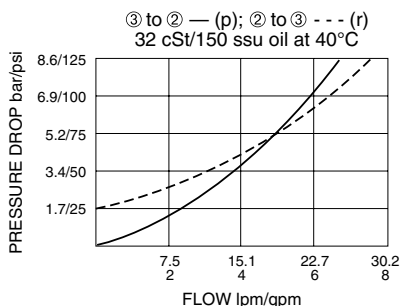
#### USASI:



#### ISO:



### Performance



### Dimensions

