

## Materials

### Cartridge:

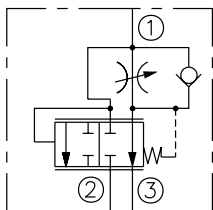
Weight: 0.30 kg. (0.68 lbs.)  
Steel with hardened work surfaces.  
Zinc-plated exposed surfaces.  
Buna N O-rings and polyester elastomer back-ups standard.

### Standard Ported Body:

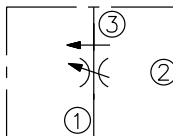
Weight: 0.36 kg. (0.80 lbs.)  
Anodized highstrength 6061 T6 aluminum alloy, rated to 207 bar (3000 psi).  
Ductile iron bodies available; dimensions may differ.

## Symbols

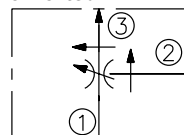
### USASI/ISO:



### 2-Ported:



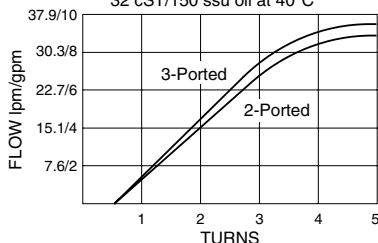
### 3-Ported:



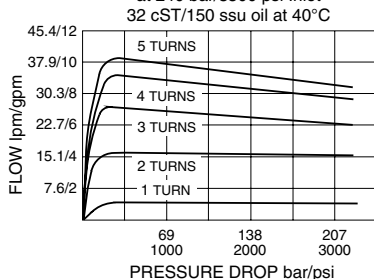
## Performance

### Regulated Flow vs. Turns 103 bar/1500 psi at Port ③

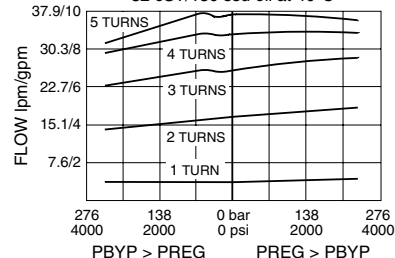
2-Ported: at 123 bar/1800 psi inlet pressure  
3-Ported: at 38 lpm/10 gpm inlet flow  
32 cST/150 ssu oil at 40°C



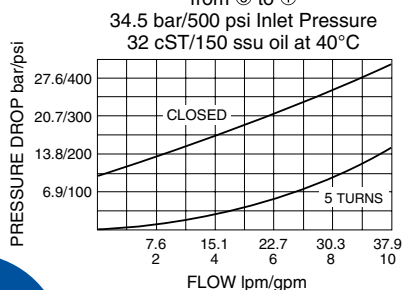
### 2-Ported Regulated Flow vs. Pressure Drop at 240 bar/3500 psi Inlet 32 cST/150 ssu oil at 40°C



### 3-Ported Regulated Flow vs. Load at 38 lpm/10 gpm Inlet 32 cST/150 ssu oil at 40°C



### Pressure Drop vs. Reverse Flow from ③ to ① 34.5 bar/500 psi Inlet Pressure 32 cST/150 ssu oil at 40°C



# FR10-39

## Flow Regulator, Pressure Compensated, 207 BAR Rated

A screw-in, cartridge-style, adjustable orifice, pressure-compensated, manually operated, bypass-type hydraulic flow regulating valve. It can be used as a priority-type flow regulator or a restrictive-type 2-way flow regulator when the bypass port (port ②) is blocked.

Porting	Hydraforce code	Article no.	Price £	Price €
Cartridge Version	FR10-39A-0-N	<b>FR1039AC</b>	<b>£74.40</b>	<b>€89.40</b>
INLINE 1/4" BSP	FR10-39A-2B-N	<b>FR1039A2B</b>	<b>£111.70</b>	<b>€134.10</b>
INLINE 3/8" BSP	FR10-39A-3B-N	<b>FR1039A3B</b>	<b>£111.70</b>	<b>€134.10</b>

with nitril seals / Viton on request

**Standard** - with 3/16" HEX ALLEN HEAD (A)

**On request** - Option (A) with cover cap (C)  
Top plastic knob

## Dimensions

