

## EC16-40

### Pressure Compensator, 207 BAR Rated

A screw-in, cartridge-style pressure-compensating element, intended for use with a remote fixed or variable orifice to yield a three-port (bypass-type), pressurecompensated, flow regulating hydraulic valve.

### Operation

The EC16-40 maintains a constant flow rate from ③ regardless of load pressure changes in the circuit downstream of ③.

The cartridge maintains a constant differential pressure from circuit point P to port ③, thereby regulating the hydraulic flow rate between the two points in the circuit. The EC16-40 is a priority type regulator, delivering pump flow first to ③, then bypassing excess to ②. All ports may be fully pressurised.

### Materials

#### Cartridge:

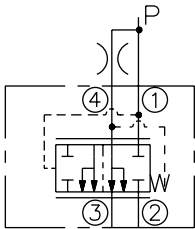
Weight: 0.36 kg. (0.80 lbs.)  
Steel with hardened work surfaces.  
Zinc-plated exposed surfaces.  
Buna N O-rings and polyester elastomer back-ups standard.

#### Ported Body:

Not available.

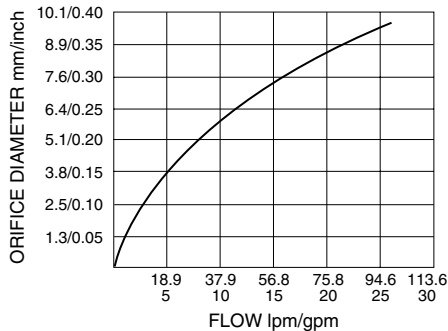
### Symbols

#### USASI/ISO:



### Performance

Output Flow vs. Orifice Dia.  
with 80 psid Spring  
32 cSt/150 ssu oil at 40°C



### Dimensions

