



## Sprung Disc Check Valve – RD40

### Suitable for ANSI and EN Flanges

- Low pressure drop.
- Simple and compact design.
- Overall lengths according to DIN 3202 part 3-K4

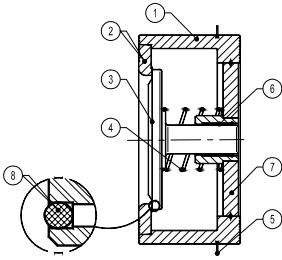
Connections Sandwiched between flanges as per EN 1092 or ANSI.  
 Installation Horizontal or vertical installation.  
 Rating PN 16 / PN 25 / PN 40



### 316 Stainless Steel

#### Materials

- 1 Valve body CF8M / 1.4408
  - 2 \* Disc AISI316 / 1.4401
  - 3 \* Spring AISI302 / 1.4300
  - 4 Star AISI316 / 1.4401
  - 6 \* Soft seal PTFE/VITON/EPDM/NITRIL – On Request
- \* Available spare parts



Article no. <b>316 SS</b>	Size	Max Pressure BAR	Price £	Price €
<b>445630</b>	1/2"	40	<b>£53.80</b>	<b>€56.40</b>
<b>445631</b>	3/4"	40	<b>£73.30</b>	<b>€77.00</b>
<b>445632</b>	1"	40	<b>£75.30</b>	<b>€79.10</b>
<b>445633</b>	1 1/4"	40	<b>£100.60</b>	<b>€105.60</b>
<b>445634</b>	1 1/2"	40	<b>£125.40</b>	<b>€131.70</b>
<b>445635</b>	2"	40	<b>£171.70</b>	<b>€180.30</b>
<b>445636</b>	2 1/2"	40	<b>£250.70</b>	<b>€263.20</b>
<b>445637</b>	3"	40	<b>£342.90</b>	<b>€360.00</b>
<b>445638</b>	4"	25	<b>£501.20</b>	<b>€526.30</b>

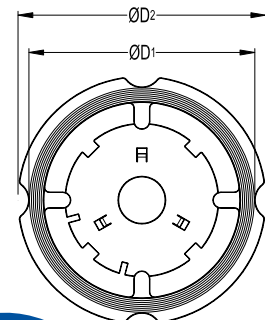
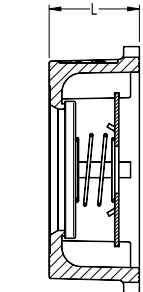
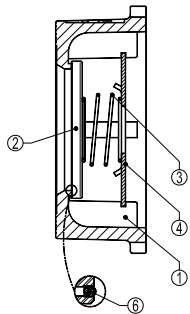
#### CE Marking ( PED - European Directive 97/23/EC)

PN 25	PN 40	Category
DN15 to DN40	DN15 to DN25	SEP - Article 3, paragraph 3.
DN50 to DN100	DN32 to DN80	Category 1 (CE marked).
-	DN100	Category 1 (CE marked).

### Carbon Steel

#### Materials

- 1 Valve body S355J2G3/1.0570
  - 2 Seat AISI316 / 1.4401
  - 3\* Disc AISI316 / 1.4401
  - 4\* Spring AISI302 / 1.4300
  - 5 Centre ring AISI304 / 1.4301
  - 6 Bearing Steel Fe Zn
  - 7 Star S355J2G3/1.0570
  - 6\* Soft seal - PTFE/VITON/EPDM/NITRIL – On Request
- \* Available spare parts



Article no. <b>CS</b>	Size	Max Pressure BAR	Price £	Price €
<b>348401</b>	5"	16	<b>£1,184.20</b>	<b>€1,243.40</b>
<b>348402</b>	6"	16	<b>£1,488.10</b>	<b>€1,562.50</b>
<b>348403</b>	8"	16	<b>£2,305.80</b>	<b>€2,421.10</b>

#### CE Marking ( PED - European Directive 97/23/EC)

PN 10/16	PN 25	PN 40	Category
DN125 to DN200	DN125	-	Category 1 (CE marked).
-	DN150 to DN200	DN125	Category 2 (CE marked).
-	-	DN150 to DN200	Category 3 (CE marked).

### Dimensions - 316 Stainless Steel

DN	DN1	DN2	L	Kg
15	43	50	17	0.18
20	53	60	20	0.2
25	64	70	23	0.25
32	75	81	28	0.5
40	86	91	32	0.7
50	96	105	40	1.3
65	115	126	46	1.7
80	132	141	50	2.8
100	152	167	60	4.5

### Dimensions - Carbon Steel

DN	DN1 PN10/16	DN2 PN25	DN2 PN40	DN2 ANSI150	DN2 ANSI300	L	Kg
125	192	192	192	192	192	90	11
150	218	226	226	226	226	106	13.5
200	273	286	293	286	286	140	24