

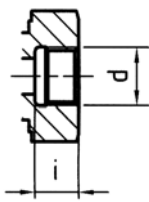
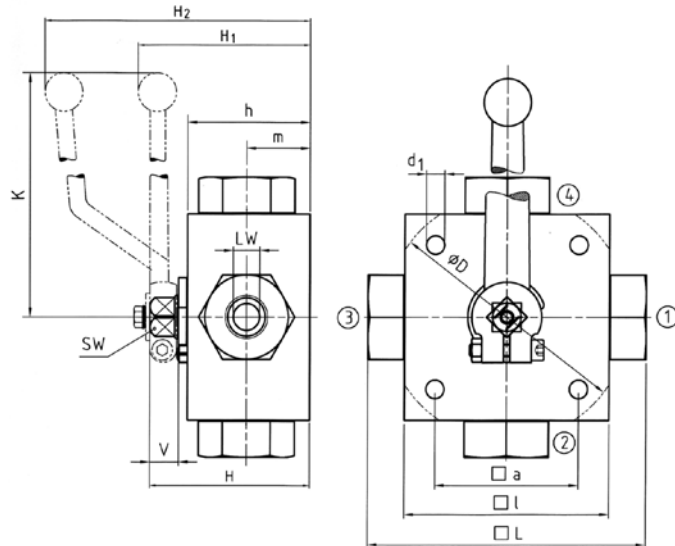


High Pressure Multi-Way Ball Valves 4 Way - 4KH Series

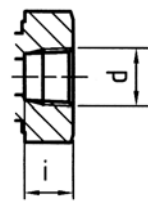
500-250 BAR Rated

Threaded Female BSP Parallel

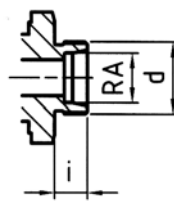
Dimensions



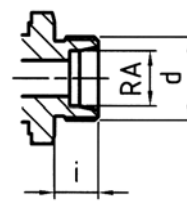
BSP
DIN ISO 228



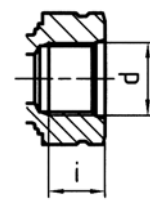
NPT
ANSI B1.20.1



DIN 2353 L



DIN 2353 S



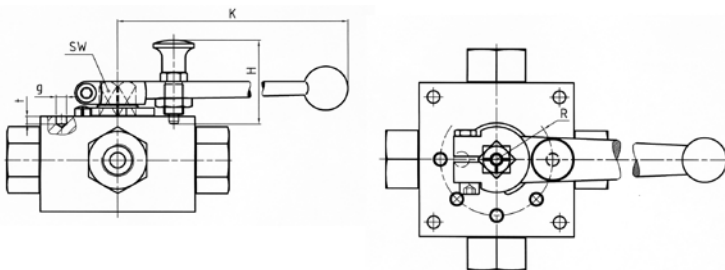
SAE J 514

DIN ISO 228 Female thread

Type	DN	LW _{L/T}	LW _x	L	D	I	a	H	h	m	K	V	SW	i	d	d ₁	H ₁	H ₂	Weight
4KH-G1/8	4	5	4	100	-	70	55	58	40	22	160	14	12	10	G1/8	6.5	-	101	1.60
4KH-G1/4	6	5	4	100	-	70	55	58	40	22	160	14	12	14	G1/4	6.5	-	101	1.60
4KH-G3/8	10	8	7	115	-	80	65	68	50	27	200	14	14	14	G3/8	6.5	72	-	2.80
4KH-G1/2	13	13	10	136	-	100	80	78	60	31	200	14	14	16,3	G1/2	9	82	-	4.90
4KH-G5/8	16	13	10	139	-	100	80	78	60	31	200	14	14	18	G5/8	9	82	-	4.90
4KH-G3/4	20	18	14	154	138	113	85	88	67	36,5	320	16.5	17	18	G3/4	8.5	96	-	6.80
4KH-G1	25	23	17	172	138	119	85	103	82	47.5	320	16.5	17	20	G1	8.5	112	-	8.50
4KH-G1 1/4	25/32	23	17	180	138	119	85	103	82	47.5	320	16.5	17	22	G1 1/4	8.5	112	-	8.80
4KH-G1 1/2	25/40	23	17	180	138	119	85	103	82	47.5	320	16.5	17	24	G1 1/2	8.5	112	-	8.80

Option with snapbolt detent

Type	DN	SW	K	H	R	g	t
3/4KH	4-6	12	175	45	20	6	7
3/4KH	8-10	14	200	45	29	6	4
3/4KH	13-16	14	200	45	29	6	4
3/4KH	20	17	240	45	28	6	4
3/4KH	25	17	240	45	28	6	4



These products are not 'PED Compliant' for use with GAS
Should you have a GAS application please contact our sales office in order that they can check the PED requirements and offer a CE marked suitable product.

High Pressure Multi-Way Ball Valves

4 Way - 4KH Series



HIGH PRESSURE BALL VALVES

500-250 BAR Rated

Threaded Female BSP Parallel

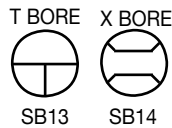
TYPE - 4KH - CARBON STEEL BALL VALVE - FOUR WAY - BSP



Size	Max pressure BAR	Article no. 'X' Bore	Price £	Price €
1/4"	500	9105042	£202.10	€212.20
3/8"	500	9105043	£221.10	€235.20
1/2"	400	9105044	£306.30	€321.60
3/4"	315	9105045	£540.60	€567.60
1"	315	9105046	£550.40	€577.90
1 1/4"	315	9105047	£700.30	€735.30
1 1/2"	250	9105048	OR	OR

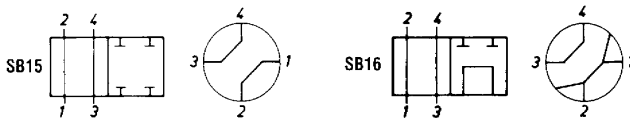
Materials

Body	Steel 9SMn28K
Ball	Chromed Steel
Stem Seal	NITRIL (Others On Request)
Ball Seal	POM-MoS2
Temp. Range	-20 TO +100°C

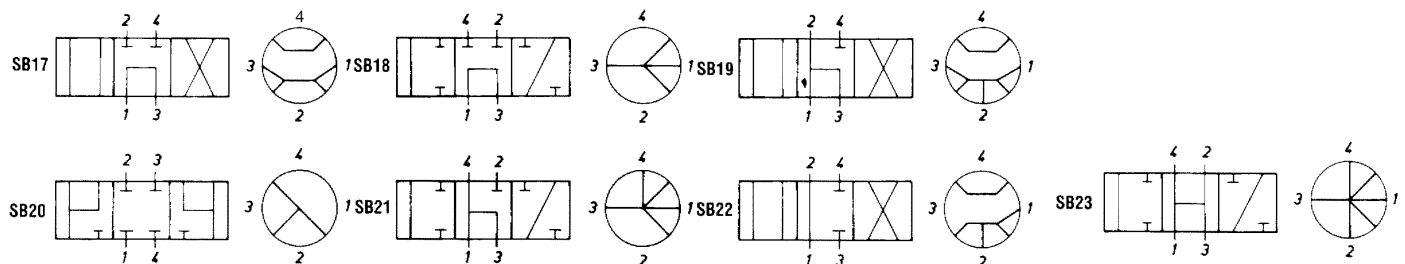


4/2-WAY BALL VALVE, OPERATION 45°

X BORE WITH MODIFIED STOP PLATE

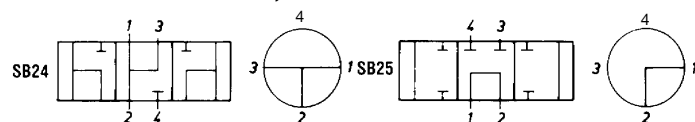


4/3-WAY BALL VALVE, OPERATION 90°



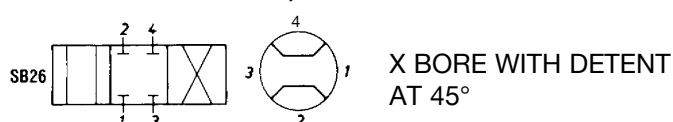
T BORE WITH DETENT

4/3-WAY BALL VALVE, OPERATION 180° WITH CLOSED POSITION AT 45° & 135°



STANDARD VALVE WITH MODIFIED STOP PLATE & DETENT

4/3-WAY BALL VALVE, OPERATION 90°



These products are not 'PED Compliant' for use with GAS. Should you have a GAS application please contact our sales office in order that they can check the PED requirements and offer a CE marked suitable product.