

## Check Valve with SAE Adapter

**210 BAR Rated (420 bar on request)**  
**3/4" - 2"**

The MHA ZENTGRAF high-pressure check valve RVZ-SAE complies with SAE 3000 (ISO 6162-1). The valve can be flanged directly against a manifold block or between two flanges. The RVZ-SAE valve can be combined with the MHA ZENTGRAF high-pressure flanged ball valve KHZ-SAE.

- 2 bar cracking pressure, others on request
- Sealing options: inlet, outlet, both sided or without sealing
- Threaded pattern on request
- Standardized SAE connection, space-saving, user-friendly, reliable and low-maintenance

### SAE 210 BAR

Article no. VALVE	Size DN	Price £	Price €
55425	20	£333.80	€344.30
55394	25	£376.80	€388.60
55395	32	£424.90	€438.20
54350	40	£501.00	€516.70
55426	50	£760.20	€783.90

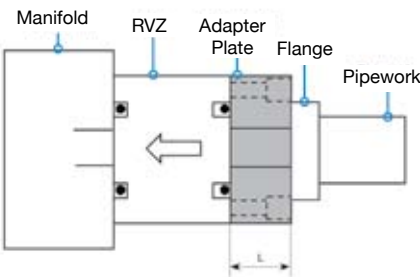
Article no. SAE ADAPTER PLATE	Size DN	Price £	Price €
55443	20	£52.90	€54.50
55444	25	£55.80	€55.40
55445	32	£61.70	€63.60
55446	40	£79.20	€81.70
55447	50	£101.90	€105.00

### SAE420 BAR

Article no. VALVE	Size DN	Price £	Price €
55731	20	£406.50	€419.20
55721	25	£413.10	€426.00
55716	32	£475.30	€490.10
55022	40	£623.50	€643.00
55726	50	£1,023.30	€1,055.20

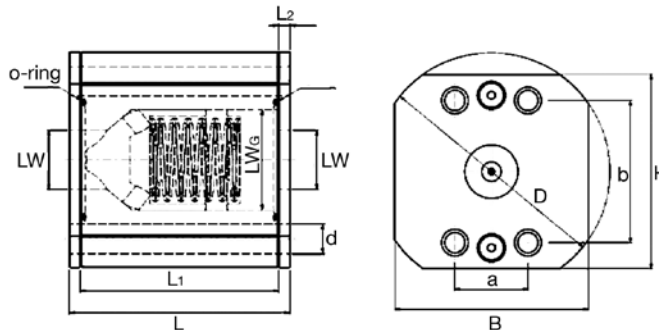
Article no. SAE ADAPTER PLATE	Size DN	Price £	Price €
554431	20	£58.20	€60.00
554442	25	£59.10	€61.00
554453	32	£67.80	€70.00
554464	40	£87.10	€89.90
554475	50	£112.00	€115.50

### SAE Adapter Plate



### Materials

Body	Steel
Poppet	Steel
Seat	Polyurethane
O-rings	NBR
Temperature	-20°C to 100°C

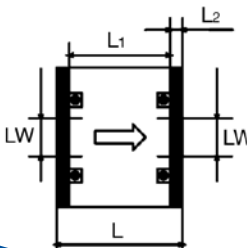


### Dimensions (mm)

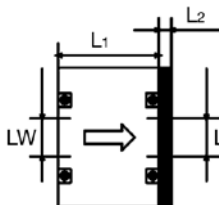
Connection	DN	LW	LW <sub>g</sub>	L	L <sub>1</sub>	L <sub>2</sub>	D	B	H	a	b	d	M	t	pÖ (Mpa)	PN (Mpa)	Part No.	
SAE210	15																	
SAE210	20																	
SAE210	25	17	28	61	53	4	97	70	80	26,2	52,4	11	M10	16	0,2	21	55394	
SAE210	32	22	37,3	82	74	4	98	80	80	30,2	58,7	11	M10	22	0,2	21	55395	
SAE210	40	28	43	89	81	4	118	90	95	35,7	69,9	13	M12	21	0,2	21	54350	
SAE210	50																	

### Options

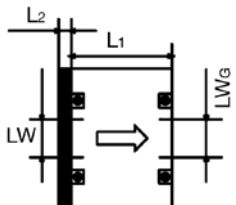
**Option A**  
without seals



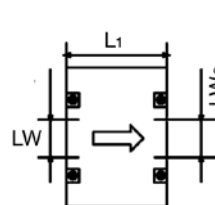
**Option B**  
inlet side sealed



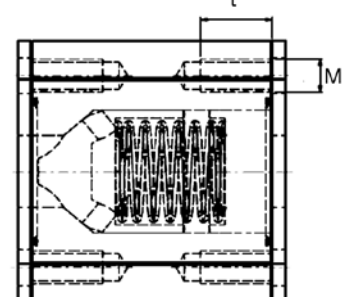
**Option C**  
outlet side sealed



**Option D**  
seals on both sides



**Option E**  
with threaded holes



Valve is supplied with 2 x 'O' rings and 2 x holding plates.  
This facilitates all options A - D