

Series: VEP-HD Flanged

SAE 6000 Series Flanged - 420 BAR Rated

Technical Features and Options

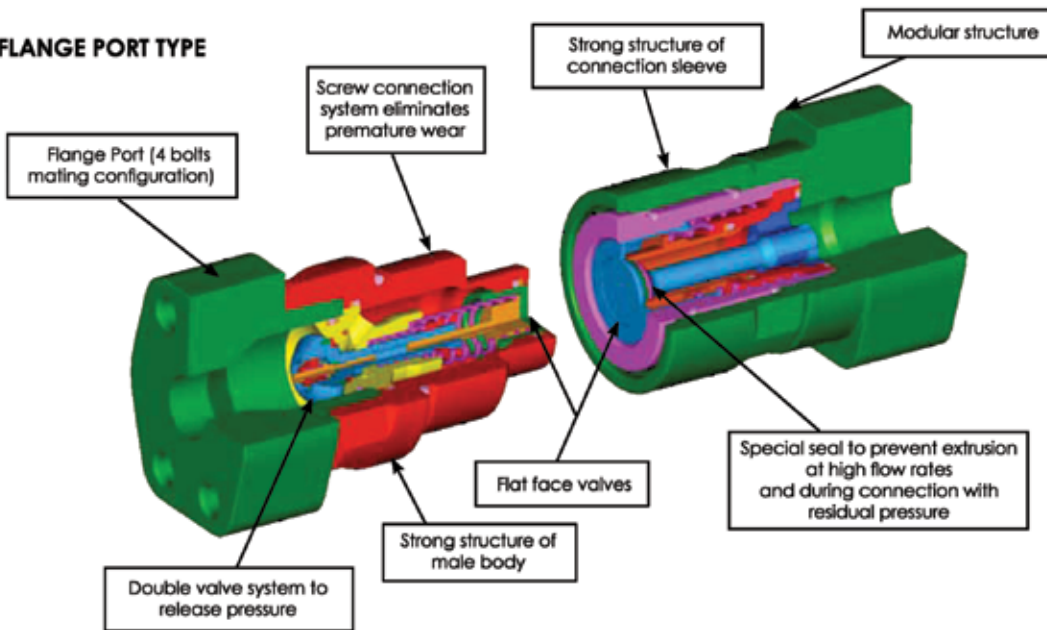
- Valve system: Flat face
- Connection system: Screw to connect
- Disconnection system: Unscrew to disconnect
- Connection with residual pressure: Allowed
- Disconnection with residual pressure: Allowed
- Construction material: High resistance carbon steel. Thread zone treatment: nitriding + oxidation (QPQ)
- Surface treatment: Zinc plated
- Seals: standard in NBR (Nitrile), PUR (Polyurethane), POM (Delrin)
- Anti-extrusion rings: PTFE



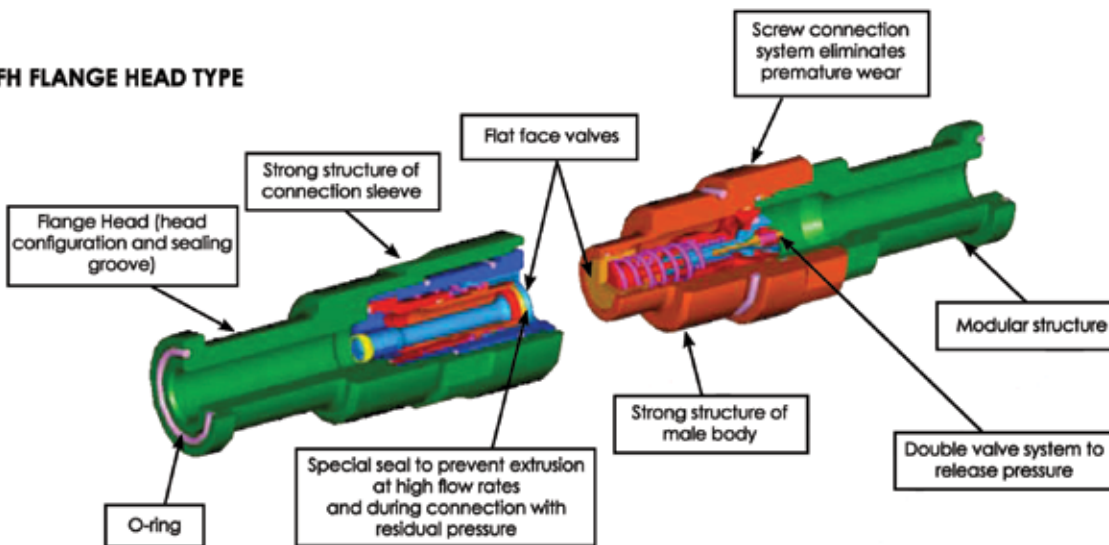
QUICK CONNECT COUPLINGS



FP FLANGE PORT TYPE



FH FLANGE HEAD TYPE



Series: VEP-HD Flanged

SAE 6000 Series Flanged - 420 BAR Rated

Performance

Description	Size	ISO Size	Rated flow		Max. flow suggested		Connect ° torque		Disconnect ° torque		Spillage*
			l/min	GPM	l/min	GPM	Nm	lbf ft	Nm	lbf ft	
VEP17HD	3/4	-	100	26,50	200	53,00	5,6	4,13	3,6	2,65	0,018
VEP21HD	1	-	189	50,09	378	100,17	8,2	6,04	5,8	4,27	0,060
VEP30HD	1-1/2	-	288	76,32	750	198,75	26,0	19,16	12,5	9,21	0,200

Description	Max. operating pressure						Description Burst pressure					
	Coupled		Male		Female		Coupled		Male		Female	
	MPa	psi	MPa	psi	MPa	psi	MPa	psi	MPa	psi	MPa	psi
VEP17HD	42	6091	42	6091	33	4785	165	24000	165	24000	100	14500
VEP21HD	42	6091	42	6091	30	4350	165	24000	165	24000	80	11600
VEP30HD	42	6091	42	6091	27	3915	165	24000	165	24000	80	11600

Description	Tightening torque		Max. residual pressure during connection						Max. residual pressure during disconnection	
			Male - Female to drain		Female - Male to drain		Male and Female			
	Nm	lbf ft	Mpa	psi	MPa	psi	MPa	psi	MPa	psi
VEP17HD	110-130	81-96	25	3625	25	3625	15	2175	15	2175
VEP21HD	125-145	92-107	25	3625	25	3625	15	2175	15	2175
VEP30HD	155-175	114-129	25	3625	25	3625	5	725	5	725

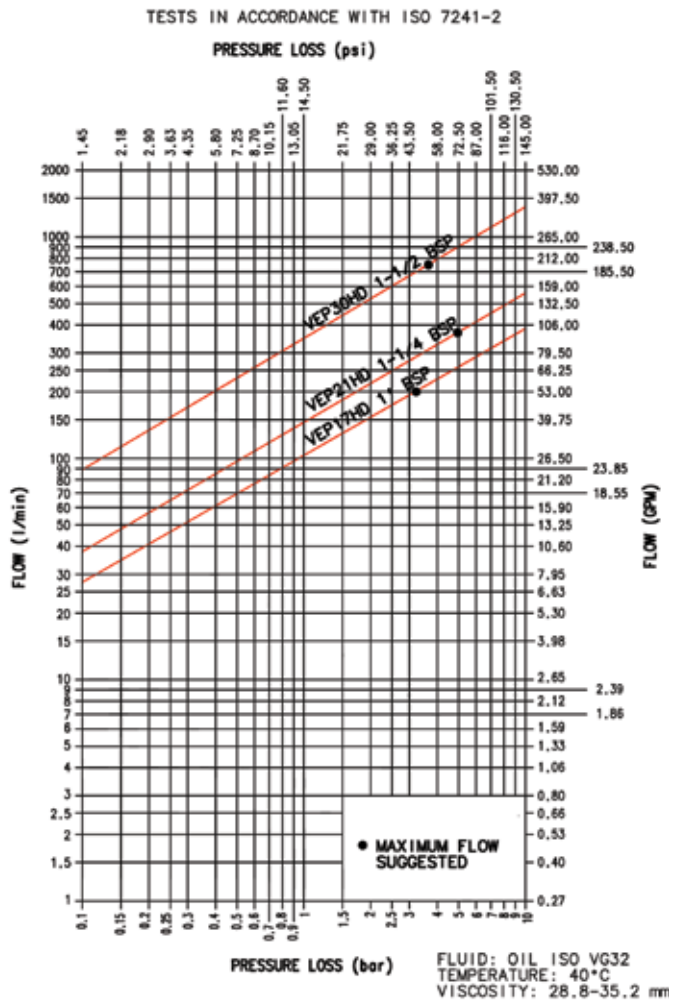
° Connect torque and disconnect torque without residual pressure. The torque increase to increasing of internal residual pressure.

* Spillage is an indicative value of the fluid loss per couple-uncouple cycle without residual pressure.

• Temperature range: Standard seals NBR, PUR, POM from -20°C to +100°C (from -4°F to +212°F).

• Tests:

The couplings coupled and the male uncoupled, have been tested at max. operating pressure for 1,000,000 impulses in according with ISO 7241-2.
The female uncoupled have been tested for 100'000 impulses.



Series: VEP-HD Flanged - with built-in solid flanges

SAE 6000 Series

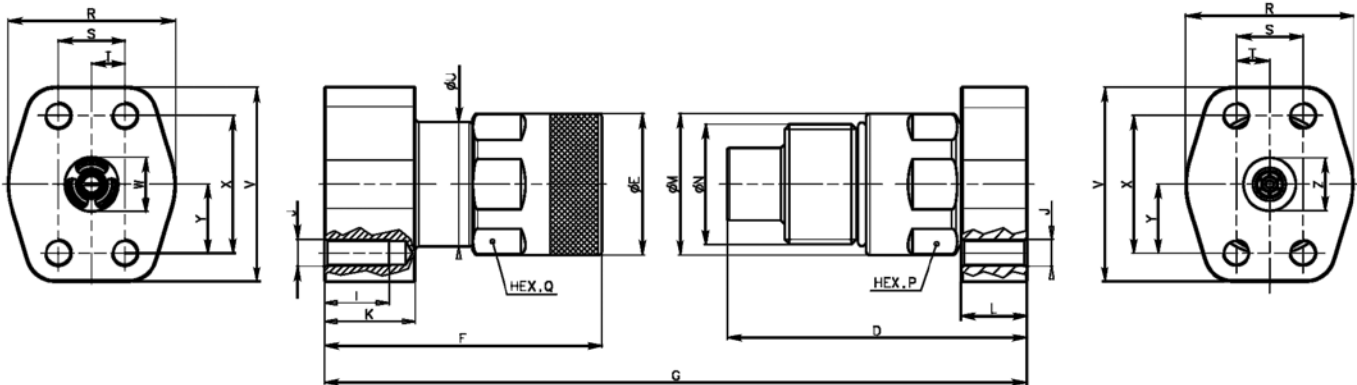


QUICK CONNECT COUPLINGS



Stucchi®

Article no.	Description	Price £	Price €
FLANGE PAD PORT			
808124020	F. VEP17HD 1" FPU CODE62	£234.40	€241.80
808124021	M. VEP17HD 1" FPU CODE62	£219.00	€225.90
808124018	F. VEP21HD 1" FPM CODE62	£284.10	€293.00
808124019	M. VEP21HD 1" FPM CODE62	£235.10	€242.50
808124022	F. VEP21HD 1-1/4" FPU CODE62	£284.10	€293.00
808124023	M. VEP21HD 1-1/4" FPU CODE62	£235.10	€242.50
808124034	F. VEP30HD 1-1/4" FPM CODE62	£548.20	€565.30
808124035	M. VEP30HD 1-1/4" FPM CODE62	£518.60	€534.80
808124036	F. VEP30HD 1-1/4" FPU CODE62	£517.20	€533.30
808124037	M. VEP30HD 1-1/4" FPU CODE62	£496.20	€511.70
808124024	F. VEP30HD 1-1/2" FPU CODE62	£524.20	€540.50
808124025	M. VEP30HD 1-1/2" FPU CODE62	£496.20	€511.70
807224020	F. VEP45P 2"FP CODE62	£1,679.00	€1,731.40
807224021	M. VEP45P 2"FP CODE62	£1,161.30	€1,197.60



Flange Port – 4 Threaded Holes (ISO 6162-2 6000 psi)

Description	Unit	D	E	F	G	I	J	K	L	M	N	P	Q	R
VEP21HD 1" FPM	mm	135.2	69.8	116.8	228	27	M12	38	38	69.8	M58x3	65	65	70
VEP30HD 11/4" FPM	mm	147.6	95	148.5	266.5	25	M14	37.9	35	94.4	80x4 TpF	75	85	78
VEP30HD 11/2" FPU	mm	149.6	95	156.6	276.6	35	M16	46	37	94.4	80x4 TpF	75	85	95

Description	Unit	S	T	U	V	W	X	Y	Z	Weight - Male	Weight - Female
VEP21HD 1" FPM	mm	27.8	13.9	68	81.05	22.5	57.2	28.6	22.5	2.23 Kg	2.82 Kg
VEP30HD 11/4" FPM	mm	31.8	15.9	89	95.25	32	66.6	33.3	32	4.01 Kg	5.68 Kg
VEP30HD 11/2" FPU	mm	36.5	18.25	89	112.8	35	79.3	39.65	32	4.81 Kg	6.91 Kg



Series: VEP-HD Split Flanged

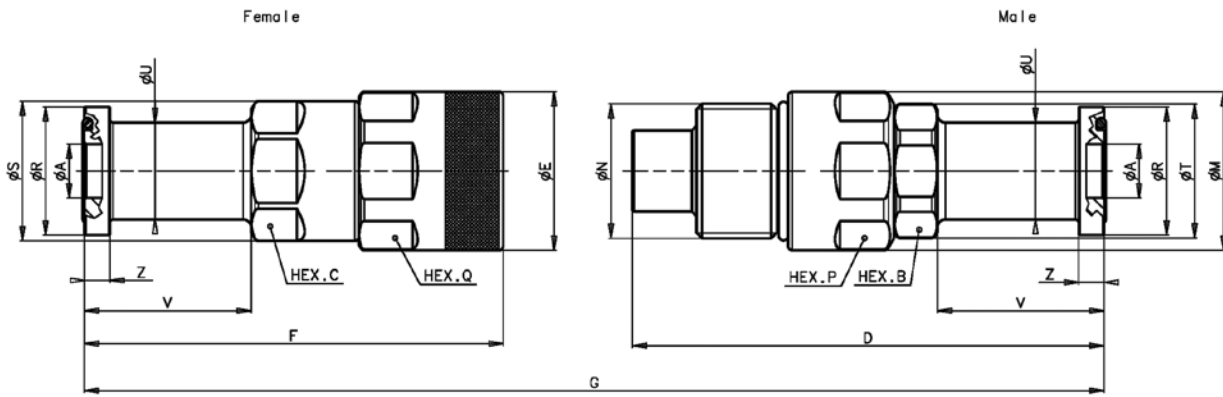
To Suit SAE 6000 Series Split Flanges

Split flanges are not included but can be supplied on request

Article no.	Description	Price £	Price €
FLANGE HEAD			
808124012	F. VEP17HD 1" FH CODE 62	£188.70	€194.60
808124013	M. VEP17HD 1" FH CODE 62	£174.70	€180.20
808124014	F. VEP21HD 1-1/4" FH CODE 62	£244.60	€252.30
808124015	M. VEP21HD 1-1/4" FH CODE 62	£209.70	€216.20
808124038	F. VEP30HD 1-1/4" FH CODE 62	£517.20	€533.30
808124039	M. VEP30HD 1-1/4" FH CODE 62	£489.20	€504.50
808124016	F. VEP30HD 1-1/2" FH CODE 62	£517.20	€533.30
808124017	M. VEP30HD 1-1/2" FH CODE 62	£489.20	€504.50
807224018	F. VEP45P 2" FH CODE 62	£1,651.40	€1,703.00
807224019	M. VEP45P 2" FH CODE 62	£1,133.30	€1,168.70



Stucchi®



Flange Head – With O-ring (ISO 6162-2 6000 PSI)

Description	Unit	A	B	C	D	E	F	G	M	N	P	Q	R
VEP17HD 1" FH	mm	20	46	46	175.4	58.8	155.7	308.3	58.8	M50x3	55	55	47.6
VEP21HD 1 1/4" FH	mm	25.6	55	55	184.2	69.8	170.8	331	69.8	M58x3	65	65	53.9
VEP30HD 1 1/4" FH	mm	28	65	65	201.6	95	199.5	371.5	94.4	80x4 TpF	75	85	53.9
VEP30HD 1 1/2" FH	mm	32	65	65	211.6	95	209.5	391.5	94.4	80x4 TpF	75	85	63.5

Description	Unit	S	T	U	V	Z	Weight - Male	Weight - Female
VEP17HD 1" FH	mm	51.8	49.8	36	62	9.5	1.65	1.68
VEP21HD 1 1/4" FH	mm	68	59.8	41.9	69	10.3	2.16	2.6
VEP30HD 1 1/4" FH	mm	89	69.8	44	69	10.3	3.61	5.01
VEP30HD 1 1/2" FH	mm	89	69.8	49	79	12.6	3.85	5.23