

Series: APM - Flat Face Male Plugs

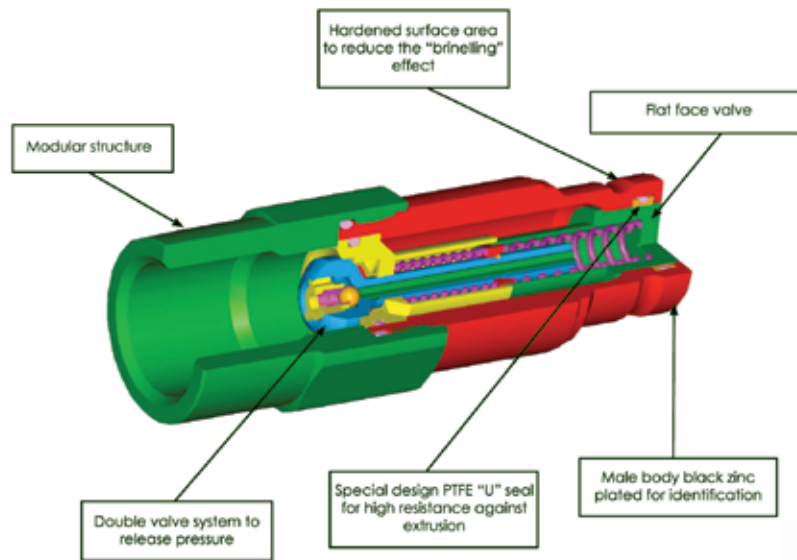
Connect with Male Under Pressure

Technical Features and Options

- Interchangeability: ISO 16028 (from size 10 to 25) HTMA (size 10)
- Valve system: Flat face
- Mechanical connection: Locking balls
- Connection system: Push to connect
- Disconnection system: Pulling back the sleeve of female
- Connection with residual pressure: Only in the APM male coupling. The female coupling must be allowed to drain
- Disconnection with residual pressure: Not allowed
- Threads available: BSP, NPT, SAE
- Threads on request: Metrics DIN, ORFS or other
- Temperature range:
Standard seals NBR (Nitrile): from -20°C to +100°C (from -4°F to +212°F)

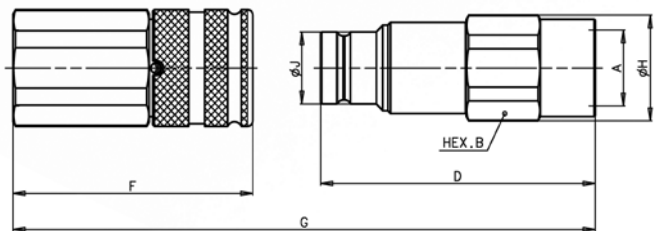
Materials

Construction Material: High grade carbon steel
 Surface treatment: CrIII zinc plated
 Internal springs: C72 steel
 Seals: standard in NBR (Nitrile)
 Anti-extrusion rings: PTFE
 On request: different materials and seals



Dimensions

Description	A	unit	B	C	D	E	F	G	H	I	J	Weight	Male	Female
APM9 3/8 BSP	3/8	mm	27	-	80	-	-	(F+D)-16	29	-	19.7	Kg	0.197	-
APM9 1/2 BSP	1/2	mm	27	-	82.5	-	-	(F+D)-16	29	-	19.7	Kg	0.195	-
APM13 1/2 BSP	1/2	mm	36	-	91	-	-	(F+D)-17.3	38.5	-	24.5	Kg	0.408	-
APM13 3/4 BSP	3/4	mm	36	-	93.5	-	-	(F+D)-17.3	38.5	-	24.5	Kg	0.404	-
APM15 3/4 BSP	3/4	mm	36	-	95	-	-	(F+D)-17.6	38.5	-	27	Kg	0.426	-
APM17 1 BSP	1	mm	46	-	108.5	-	-	(F+D)-22	49.8	-	30	Kg	0.750	-
APM21 1-1/4 BSP	1-1/4	mm	55	-	123.5	-	-	(F+D)-23	59.8	-	36	Kg	1.160	-
APM30 1-1/2 BSP	1-1/2	mm	70	-	146.9	-	-	(F+D)-28.6	75.8	-	57	Kg	2.580	-



How To Use

- Before connection, clean the flat mating surface of the quick coupling to avoid the inclusion of dirt into the circuit.
- To connect push the male half towards the female half or vice versa.
- Once connected, to prevent accidental disconnection, turn the external sleeve to engage lock function.
- To uncouple turn the external sleeve until the sleeve lock groove corresponds with the safety lock ball and pull back the sleeve.

Warning!

- Do not couple-uncouple with flow in the circuit. Connection is allowed only with residual pressure trapped in the circuit.
- Do not couple-uncouple when the temperature inside of the circuit is higher than 80°C (176°F).
- When the couplings are disconnected, it is suggested to use the protection caps. The protection caps of "FIRG-A" series are suitable with male couplings "APM".
- It is important to maintain a good cleanliness of circuit because contamination could compromise the function of the internal double valve.





Series: APM - Flat Face Male Plugs

Performance

	Size	ISO Size	Max. flow suggested		Connect force		Disconnect force		Spillage*
	Inch	mm	l/min	GPM	N	lbf	N	lbf	ml
APM9	3/8	10.0	46	12.19	165	37.13	40	9.00	0.016
APM13	1/2	12.5	90	23.85	190	42.75	70	15.75	0.010
APM15	5/8	16.0	148	39.22	160	36.00	50	11.25	1.200
APM17	3/4	19.0	200	53.00	260	58.50	80	18.00	0.180
APM21	1	25.0	378	100.17	300	67.50	90	20.25	0.180
APM30	1-1/2	-	750	198.75	440	99.00	80	18.00	0.400

Description	Max. operating pressure				Description Burst pressure				Max. residual pressure	
	Coupled °		Male		Coupled °		Male			
	MPa	psi	MPa	psi	MPa	psi	MPa	psi	MPa	psi
APM9	35	5075	35	5075	100	14500	120	17400	30	4350
APM13	33	4785	33	4785	100	14500	120	17400	30	4350
APM15	33	4785	33	4785	100	14500	120	17400	30	4350
APM17	33	4785	33	4785	100	14500	120	17400	25	3625
APM21	30	4350	30	4350	80	11600	100	14500	25	3625
APM30	27	3915	27	3915	80	11600	100	14500	20	2900

* Spillage is an indicative value of the fluid loss per couple-uncouple cycle.

° Tested with female couplings "A" series

Article no.	Description	Price £	Price €
BSP THREAD			
805200001	M. APM9 3/8" BSP	£37.00	€38.20
805200003	M. APM9 1/2" BSP	£38.90	€40.10
805200005	M. APM13 1/2" BSP	£46.20	€47.70
805200007	M. APM13 3/4" BSP	£47.20	€48.70
805200009	M. APM15 3/4" BSP	£87.90	€90.70
805200037	M. APM17 3/4" BSP	£104.30	€107.50
805200011	M. APM17 1" BSP	£104.30	€107.50
805200017	M. APM21 1-1/4" BSP	£215.80	€222.60
805200015	M. APM30 1-1/2" BSP	£474.80	€489.70
BSPT THREAD			
805203003	M APM9 3/8" BSPT	£38.00	€39.20
NPT THREAD			
805201001	M. APM9 3/8" NPT	£38.00	€39.20
805201003	M. APM9 1/2" NPT	£39.80	€41.10
805201005	M. APM13 1/2" NPT	£47.20	€48.70
805201007	M. APM13 3/4" NPT	£48.10	€49.60
805201009	M. APM15 3/4" NPT	£88.80	€91.60
805201019	M. APM17 3/4" NPT	£105.20	€108.50
805201011	M. APM17 1" NPT	£105.20	€108.50
805201017	M. APM21 1-1/4" NPT	£220.10	€227.00
805201015	M. APM30 1-1/2" NPT	£479.10	€494.10

Article no.	Description	Price £	Price €
SAE THREAD			
805204001	M. APM9 1/2" SAE	£40.70	€42.00
805204025	M. APM13 1/2" SAE	£48.10	€49.60
805204003	M. APM13 5/8" SAE	£48.10	€49.60
805204005	M. APM13 3/4" SAE	£49.10	€50.60
805204007	M. APM15 3/4" SAE	£89.80	€92.60
805204027	M. APM17 3/4" SAE	£106.10	€109.40
805204009	M. APM17 1" SAE	£106.10	€109.40
805204017	M. APM21 1-1/4" SAE	£224.50	€231.50
805204015	M. APM30 1-1/2" SAE	£483.50	€498.60