



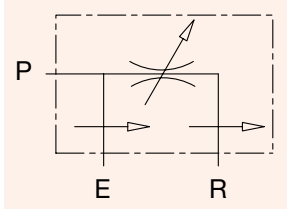
3 Way Flow Control Valves - VPP

250 BAR Rated
Pressure Compensated, Exceeding Flow to Pressure

Technical data

| | |
|-------------------------------------|--|
| Mineral oil | ISO 6743/4 / DIN 51524 |
| Fluid viscosity | 10-500 mm ² /s / 6 to 420 cSt |
| Max contamination index with filter | ISO 4406:1999 / Classe 19/17/14 |
| Fluid temperature | -20°C +80°C |
| Ambient temperature | -20°C +50°C |

It is necessary a filter use to protect the valve (advised filtration 15 micron)

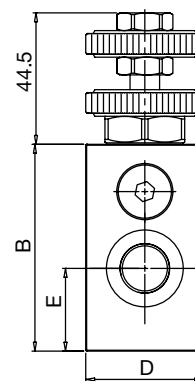
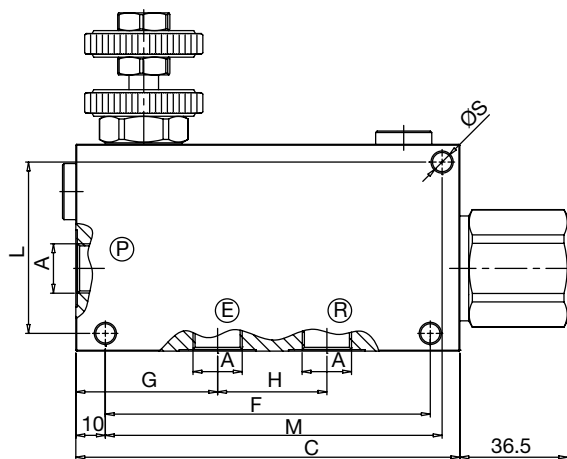
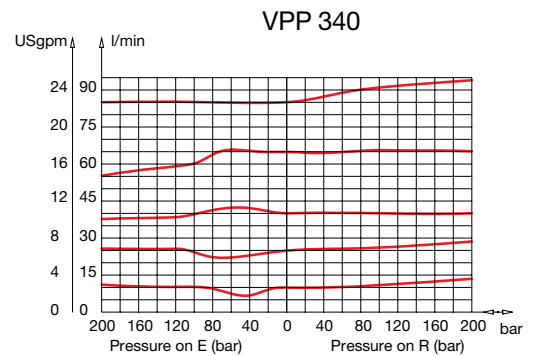
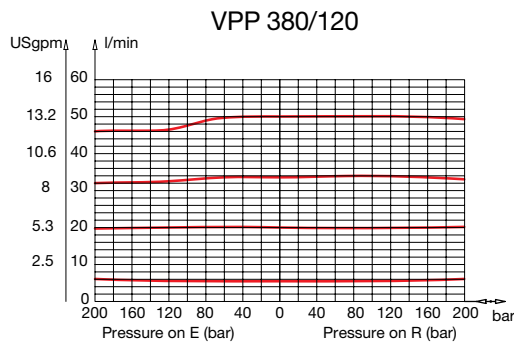


Ordering code

VPP - X - Y

| X | Size | Y | |
|-----|----------|---|------------|
| 380 | BSPP 3/8 | V | Hand Wheel |
| 120 | BSPP 1/2 | | |
| 340 | BSPP 3/8 | | |

Pressure Drop Graphs



Dimensions (mm)

| Code | A | Max Flow l/min | Max pressure bar (PSI) | B | C | D | E | F | G | H | L | M | S | Weight kg |
|--------|----------|-------------------|---------------------------|-----|-----|----|------|----|----|----|---|----|-----|--------------|
| VPP380 | BSPP 3/8 | 50 | 250 (3625) | 90 | 90 | 40 | 43.5 | 31 | 42 | 64 | 6 | 78 | 6.5 | 1.15 |
| VPP120 | BSPP 1/2 | 90 | 250 (3625) | 90 | 90 | 40 | 43.5 | 31 | 42 | 64 | 6 | 78 | 6.5 | 1.15 |
| VPP340 | BSPP 3/4 | 150 | 250 (3625) | 110 | 110 | 50 | 45.5 | 35 | 50 | 88 | 8 | 94 | 8.5 | 2.10 |