

# Single Counterbalance Valves for Closed Centre - VCCL

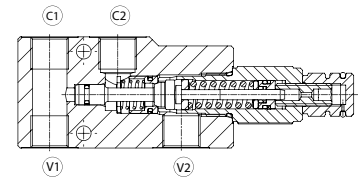
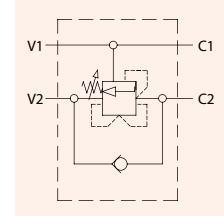


HYDRAULIC VALVES

## Technical data

Mineral oil ISO 6743/4 / DIN 51524  
 Fluid viscosity 10-500 mm<sup>2</sup> / s  
 Max contamination index with filter ISO 4406:1999 / Classe 19/17/14  
 Fluid temperature -20°C +80°C  
 Ambient temperature -20°C +50°C  
 It is necessary a filter use to protect the valve (advised filtration 15 micron)

Article no.	Size	Price £	Price €
<b>VCCL140</b>	BSPP 1/4"	<b>£60.30</b>	<b>€62.10</b>
<b>VCCL380</b>	BSPP 3/8"	<b>£60.30</b>	<b>€62.10</b>
<b>VCCL120</b>	BSPP 1/2"	<b>£65.00</b>	<b>€67.00</b>

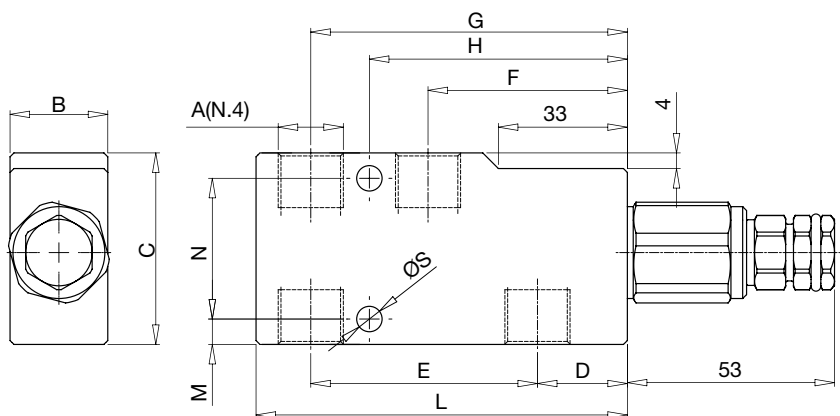
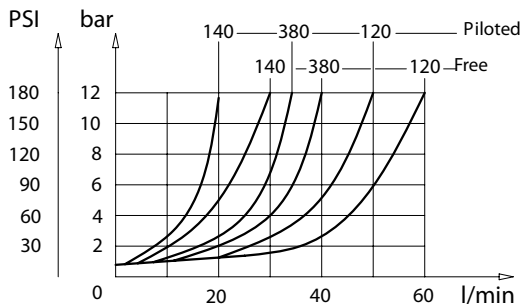


## Ordering code

### VCCL - X - Y - K - I

X	Size BSPP	Y	Spring bar	Pressure increase	Std. setting (Q=5 l/min)	K	Material	I	Pilot ratio
140	1/4	1	30/210	70 bar/turn	200 bar	S	Steel body	/	1:4.25 Standard
380	3/8	2	60/350	120 bar/turn	350 bar			8	1:8
120	1/2								

## Pressure Drop



## Dimensions (mm)

Code	A	Max Flow l/min	Max pressure bar (PSI)	B	C	D	E	F	G	H	L	M	N	S	Weight kg
VCCL140	BSPP 1/4	30	350 (5000)	30	50	23	58	51	81	66	95	7	36	6.5	0.85
VCCL380	BSPP 3/8	40	350 (5000)	30	50	23	58	51	81	66	95	7	36	6.5	0.85
VCCL120	BSPP 1/2	60	350 (5000)	30	60	21	63	51	84	67.5	100	10	40	6.5	1.25