

# Double Contact Adjustable Pressure Switch – F4 Series

## 25 - 400 BAR Rated

F4 adjustable pressure switches provide an electrical signal once a set pressure value is reached. Preset pressure is adjusted by rotating a screw, located in the centre of the switch, clockwise to increase pressure & anti-clockwise to decrease pressure.

Note: for the switch with the DIN connector the screw is recessed, - a 2mm allen key is required. Mechanical stops protect the spring & micro-switch from over pressurisation.

Article no.	Adjustable Pressure Range BAR	Max Pressure BAR	Fixed Hysteresis Value	Price £	Price €
<b>F4R</b>	0.2-2.5	25	10%	<b>£35.80</b>	<b>€36.90</b>
<b>F4S</b>	1-12	25	10%	<b>£35.80</b>	<b>€36.90</b>
<b>F4T</b>	5-50	300	15%	<b>£38.50</b>	<b>€39.70</b>
<b>F4V</b>	10-100	300	15%	<b>£38.50</b>	<b>€39.70</b>
<b>F4Z</b>	20-300	300	15%	<b>£38.50</b>	<b>€39.70</b>
<b>F4Y</b>	50-400	600	25%	<b>£50.50</b>	<b>€52.10</b>

Includes M2 Connection Plug

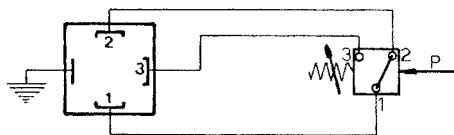
### Technical Features

Body	STEEL
Connection	1/4" BSP Male
Mounting	Any Orientation
Temp. Range	-25 to +85°C
Frequency	90 CYCLES/MIN
Accuracy	±4% of Set Pressure
Fixed Hysteresis	As above table - End of scale value
Weight	50gm

### Electrical Features M2 (DIN PLUG)

Electrical Connection	DIN 43650
Weatherproof	IP65
Max. Contact Load	0.5 ampere at 250v AC

### Electrical connection



NORMALLY OPEN  
OR  
NORMALLY CLOSED



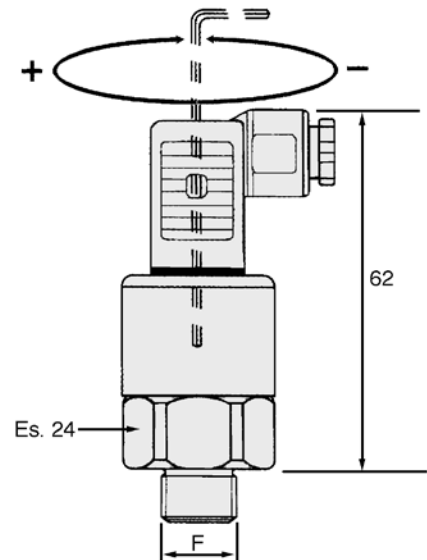
CE Ex II 3 G/D EEx e T6



Execution with electric connection M2

### Dimensions

Pressure adjustment by 2mm allen key



SWITCHES & TRANSMITTERS