

## CV10-20

### Check Valve, 240 BAR Rated

A screw-in, cartridge-style, hydraulic check valve for use as a blocking or load-holding device.

### Materials

#### Cartridge:

Weight: 0.08 kg. (0.17 lbs.)  
Steel with hardened work surfaces.  
Zinc-plated exposed surfaces.  
Buna N O-rings and polyester elastomer back-ups standard.

#### Standard Ported Body:

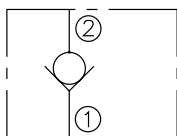
Weight: 0.16 kg. (0.35 lbs.)  
Anodized highstrength 6061 T6 aluminum alloy, rated to 207 bar (3000 psi).  
Ductile iron bodies available; dimensions may differ.

Porting	Hydraforce code	Article no.	Spring Options	Price £	Price €
Cartridge Version	CV10-20-0-N-*	<b>CV1020C*</b>	* suffix with 5 = 0.34 Bar (5 PSI)	<b>£21.40</b>	<b>€25.70</b>
INLINE 1/4" BSP	CV10-20-2B-N-*	<b>CV10202B*</b>	15 = 1 BAR (15 PSI) 30 = 2.1 BAR (30 PSI) 40 = 2.8 BAR (40 PSI)	<b>£60.20</b>	<b>€72.20</b>
INLINE 3/8" BSP	CV10-20-3B-N-*	<b>CV10203B*</b>	70 = 4.8 BAR (70 PSI) 100 = 6.9 BAR (100 PSI)	<b>£59.40</b>	<b>€71.20</b>
INLINE 1/2" BSP	CV10-20-4B-N-*	<b>CV10204B*</b>	200 = 13.6 BAR (200 PSI) 300 = 20.4 BAR (300 PSI)	<b>£59.50</b>	<b>€71.20</b>

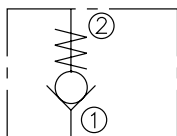
**with nitril seals / Viton on request**

### Symbols

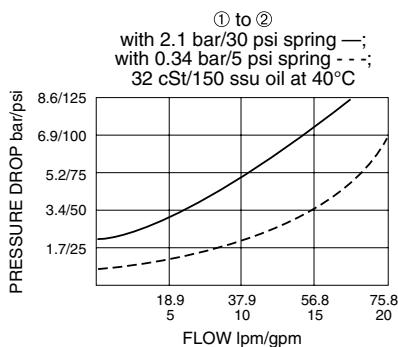
#### USASI:



#### ISO:



### Performance



### Dimensions

