

FR10-33

Flow Regulator, Pressure Compensated, 207 BAR Rated

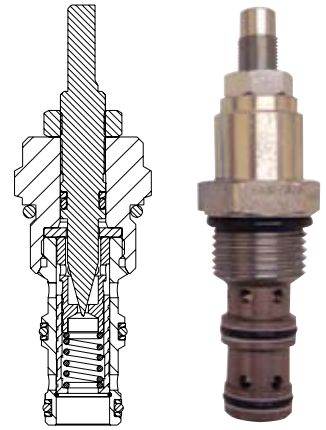
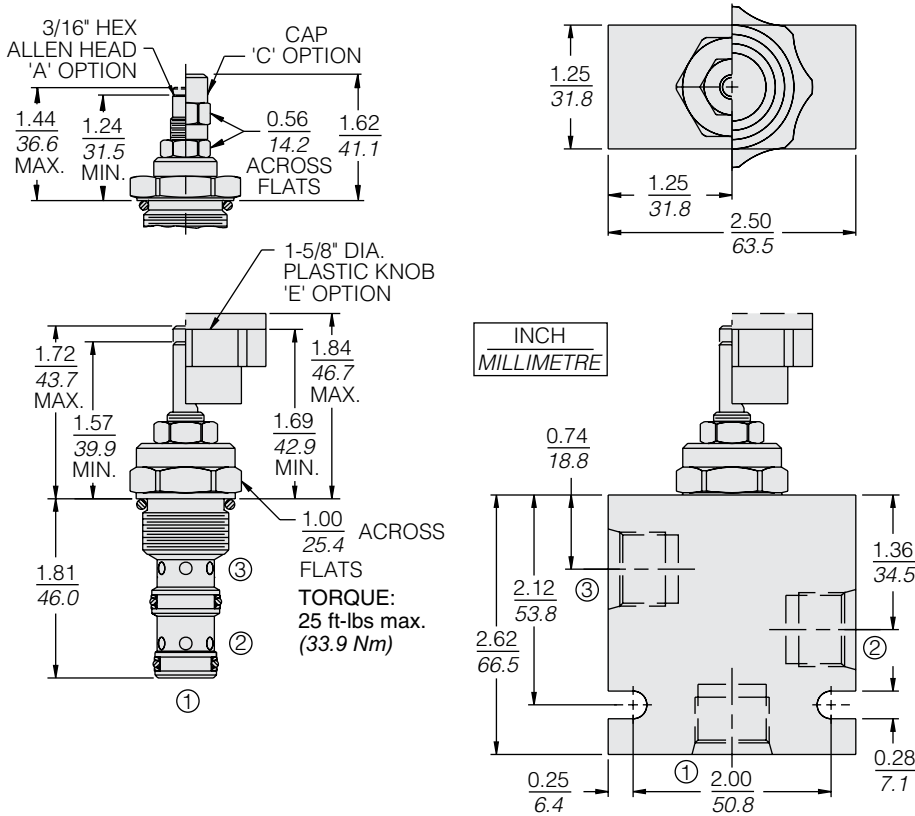
A screw-in, cartridge-style, adjustable orifice, pressure-compensated, manually operated, bypass-type hydraulic flow regulating valve. It can be used as a priority-type flow regulator or a restrictive-type 2-way flow regulator when the bypass port (port ②) is blocked.

Porting	Hydraforce code	Article no.	Price £	Price €
Cartridge Version	FR10-33A-0-N	FR1033AC	£98.50	€118.20
INLINE 1/4" BSP	FR10-33A-2B-N	FR1033A2B	£148.60	€178.30
INLINE 3/8" BSP	FR10-33A-3B-N	FR1033A3B	£148.60	€178.30

with nitril seals / Viton on request

- Standard** - with 3/16" HEX ALLEN HEAD (A)
On request - Option (A) with cover cap (C)
 Top plastic knob

Dimensions



HYDRAFORCE

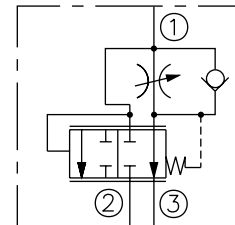
Materials

Cartridge:
 Weight: 0.30 kg. (0.68 lbs.)
 Steel with hardened work surfaces.
 Zinc-plated exposed surfaces.
 Buna N O-rings and polyester elastomer back-ups standard.

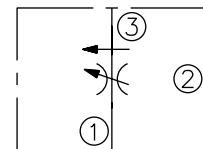
Standard Ported Body:
 Weight: 0.36 kg. (0.80 lbs.)
 Anodized highstrength 6061 T6 aluminum alloy, rated to 207 bar (3000 psi).
 Ductile iron bodies available; dimensions may differ.

Symbols

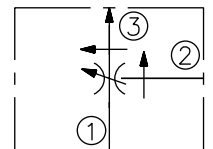
USASI/ISO:



2-Ported:



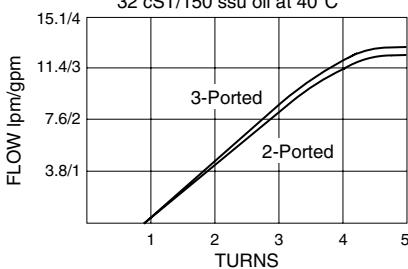
3-Ported:



Performance

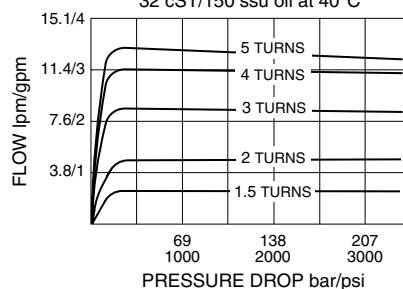
Regulated Flow vs. Turns 103 bar/1500 psi at Port ③

2-Ported: at 123 bar/1800 psi inlet pressure
 3-Ported: at 19 lpm/5 gpm inlet flow
 32 cST/150 ssu oil at 40°C



2-Ported Regulated Flow vs. Pressure Drop

at 240 bar/3500 psi Inlet
 32 cST/150 ssu oil at 40°C



3-Ported Regulated Flow vs. Load

at 18.9 lpm/5 gpm Inlet
 32 cST/150 ssu oil at 40°C

