

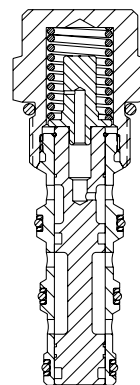
PD10-45

Piloted 2-Way Spool, 207 BAR Rated

A screw-in, cartridge-style, pilot-operated, spool-type, hydraulic directional valve for two-way circuits requiring remote pilot actuation and vented spring chamber.

Porting	Hydraforce code	Article no.	Bias Spring Options	Price £	Price €
Cartridge Version	PD10-45-0-N*	PD10450C*	* suffix with 60 = 4.1 BAR (60 PSI)	£71.10	€85.30
INLINE 1/4" BSP	PD10-45-2B-N*	PD10452B*	110 = 7.6 BAR (110 PSI) 170 = 11.7 BAR (170 PSI)	£133.30	€159.90
INLINE 3/8" BSP	PD10-45-3B-N*	PD10453B*		£128.40	€154.10

with nitril seals / Viton on request



HYDRAFORCE

Materials

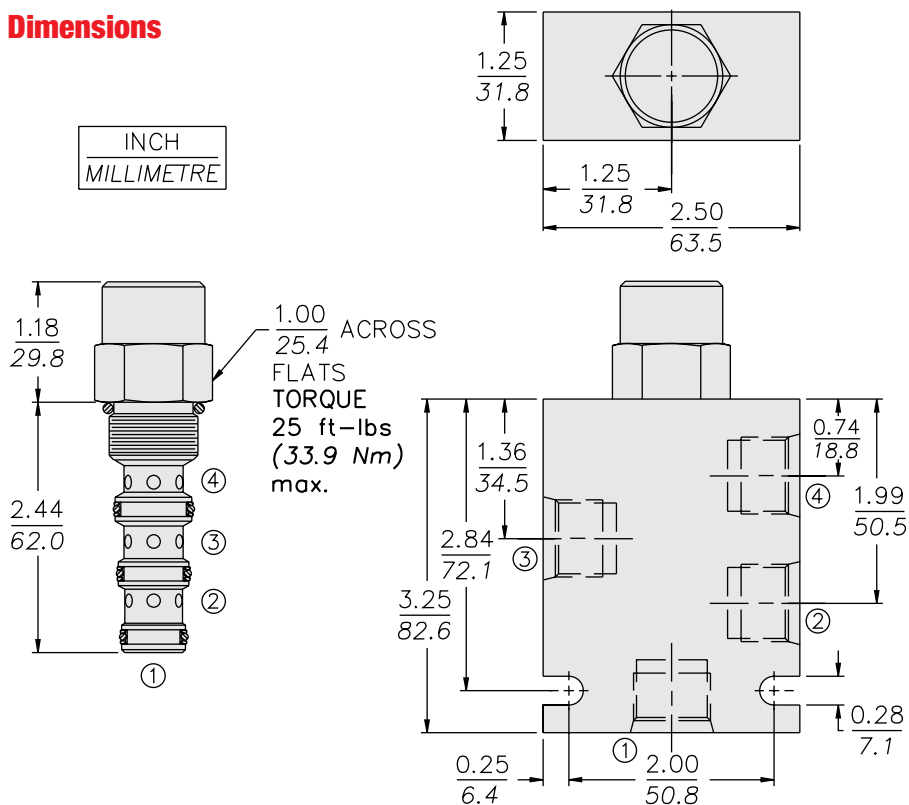
Cartridge:

Weight: 0.16 kg. (0.35 lbs.)
Steel with hardened work surfaces.
Zinc-plated exposed surfaces.
Buna N O-rings and polyester elastomer back-ups standard.

Standard Ported Body:

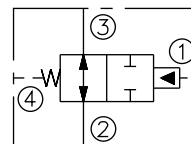
Weight: 0.34 kg. (0.75 lbs.)
Anodized highstrength
6061 T6 aluminum alloy,
rated to 207 bar (3000 psi).
Ductile iron bodies available;
dimensions may differ.

Dimensions

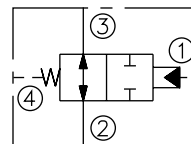


Symbols

USASI:



ISO:



Performance

