

PR50-36

HIGH PRESSURE

**Pressure Reducing/Relieving, Pilot-Operated
345 bar (5000 psi) BAR Rated**

A screw-in, cartridge-style, pilot-operated, spool-type, hydraulic pressure reducing/relieving valve with internal pilot and internal spring chamber drain, designed to act as a pressure-regulating device for secondary circuits.

Porting	Hydraforce code	Article no.	Spring Options	Price £	Price €
INLINE SAE 6	PR50-36A-6TD-P-50	PR5036A6TD50	206.9 to 344.8 BAR	£200.70	€240.90

with Polyurethane seals

- Standard** - with 1/4" HEX ALLEN HEAD 'A'
On request - 1 1/2" dia alum knob 'B'
 Option 'A' with cover cap 'C'
 Factory Set - Non Adjustable 'F'
 Factory Set - Hidden Adjustment 'H'
 Lockwire Holes 'L'

Materials

Cartridge:

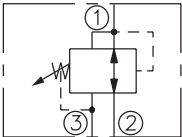
Weight: 0.27 kg. (0.60 lbs.)
 Steel with hardened work surfaces.
 Zinc-plated exposed surfaces.
 Polyurethane O-rings and
 Fluorocarbon back-ups standard.
 Anodized aluminum knobs
 and caps.

Standard Ported Body:

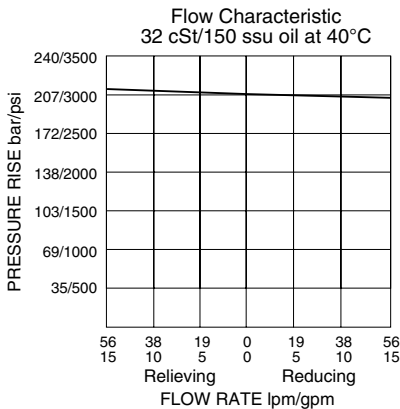
Weight: 0.64 kg. (1.41 lbs.)
 Ductile Iron (code "D")

Symbols

USASI/ISO:



Performance



Dimensions

