

SF08-20 - High Pressure

2 Way, Normally Closed, 345 BAR Rated

A solenoid-operated, 2-way, normally closed, piloted poppet-type, screw-in hydraulic cartridge valve, intended to act as a blocking or load-holding device for low flow circuits.

Voltage	Hydraforce code	Article no.	Price £	Price €
CARTRIDGE VERSION				
24V DC	SF08-20-0-P-24DG	SF0820C24	£96.90	€116.30
110V AC	SF08-20-0-P-115AG	SF0820C115	£117.00	€140.50
220V AC	SF08-20-0-P-230AG	SF0820C230	£123.60	€148.30
INLINE WITH DUCTILE IRON BODY 3/8" BSP				
24V DC	SF08-20-3BD-P-24DG	SF08203B24	£162.30	€194.80
110V AC	SF08-20-3BD-P-115AG	SF08203B115	£182.50	€219.00
220V AC	SF08-20-3BD-P-230AG	SF08203B230	£189.00	€226.80
with polyurethane seals				
WITH 'G' DIN CONNECTOR PLUG				

On request - Viton Seals - Screen filter protection - Manual Override
On request - For DC coils with spade or push on connections



HYDRAFORCE

Materials

Cartridge:

Weight: 0.09 kg. (0.20 lbs.).
Steel with hardened work surfaces.
Zinc-plated exposed surfaces.
Polyurethane cast O-rings and
Fluorocarbon back-up standard.

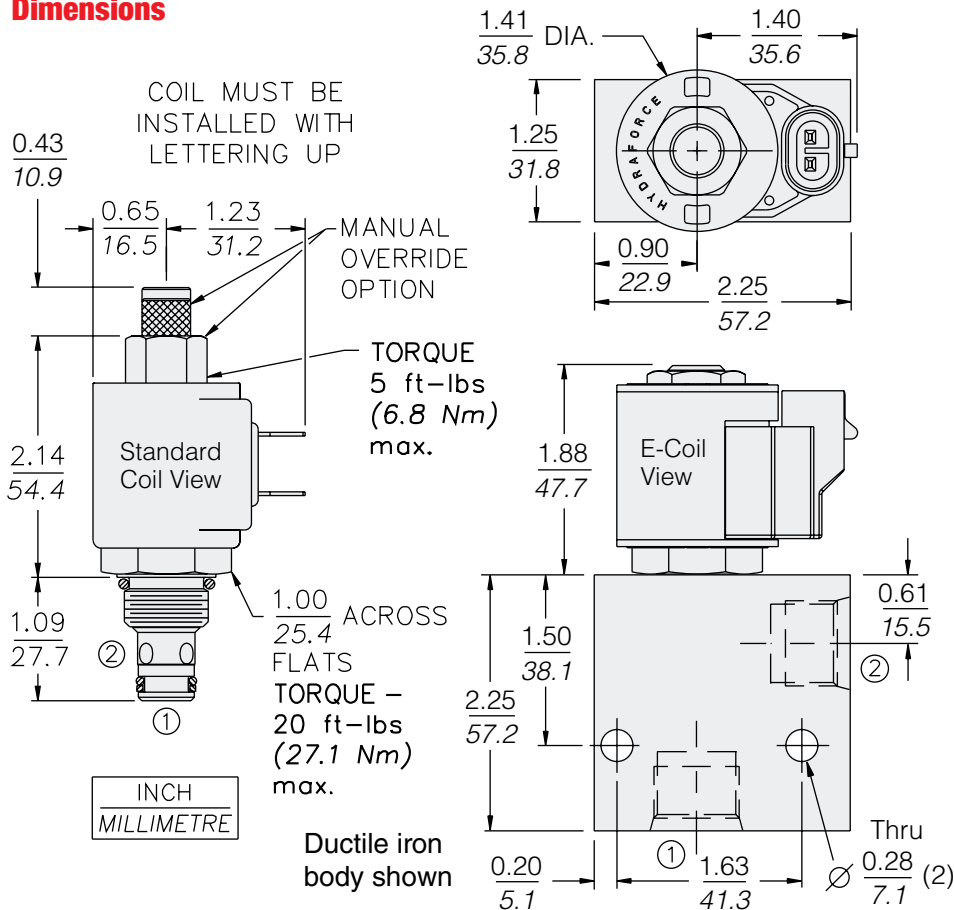
Ported Body:

Weight: 0.54 kg. (1.2 lbs.),
Ductile iron standard.
Rated to 345 bar (5000 psi).

Standard Coil:

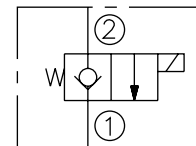
Weight: 0.11 kg. (0.25 lbs.).
Unitized thermoplastic encapsulated.

Dimensions

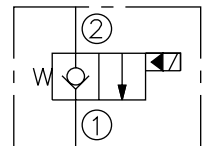


Symbols

USASI:



ISO:



Performance (Cartridge Only)

