



SP10-57C

5 Way, 3 Position, Spool, 207 BAR Rated

A solenoid-operated, 5-way, 3-position, proportional, screw-in hydraulic cartridge valve with integral load-sense port.

Materials

Cartridge:

Weight: 0.36 kg. (0.80 lbs.)
Steel with hardened work surfaces.
Zinc-plated exposed surfaces.
Buna N O-rings and back-ups standard.

Standard Ported Body:

Weight: 0.41 kg. (0.85 lbs.)
Anodized highstrength 6061 T6 aluminum alloy, rated to 207 bar (3000 psi).
Ductile iron bodies available; dimensions may differ.

Standard Coil:

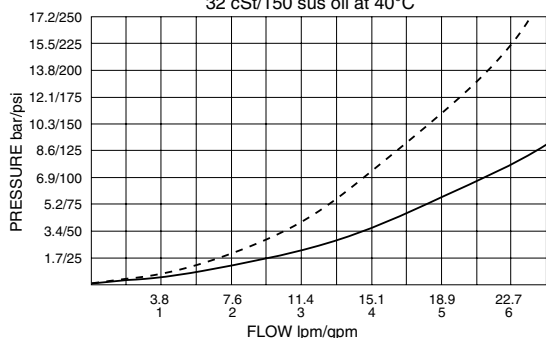
Weight each: 0.27 kg. (0.60 lbs.)
Unitized thermoplastic encapsulated.

Voltage	Hydraforce code	Article no.	Price £	Price €
CARTRIDGE VERSION				
24V DC	SP10-57C-0-N-24DG	SP1057CC24	£253.60	€304.30
INLINE WITH BODY SAE6				
24V DC	SP10-57C-6T-N-24DG	SP1057C6T24	£407.90	€489.50
INLINE WITH BODY SAE8				
24V DC	SP10-57C-8T-N-24DG	SP1057C8T24	£407.90	€489.50
with nitril seals				
WITH 'G' DIN CONNECTOR PLUG				

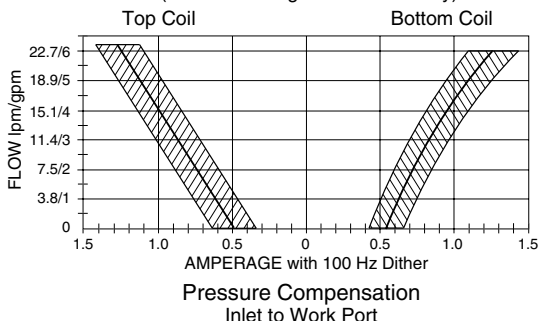
On request - Viton Seals - Screen filter protection - Manual Override
On request - For DC coils with spade or push on connections

Performance

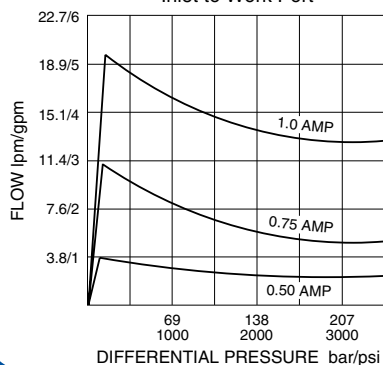
⑤ to ② or ⑤ to ④ at 100% current, S1 or S2 energized: - - - - -
④ to ③ or ② to ③ at 100% current, S1 or S2 energized: _____
32 cSt/150 sus oil at 40°C



Performance with 12 VDC Coils and 10.3 bar/150 psi inline compensator (for other voltages consult factory)

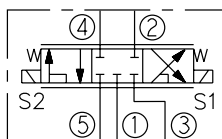


Pressure Compensation Inlet to Work Port

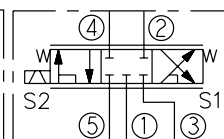


Symbols

USASI:



ISO:



Dimensions

