



SV10-22

2 Way, Normally Closed, 207 BAR Rated

A solenoid-operated, 2-way, normally closed, poppet-type, screw-in hydraulic cartridge valve, designed for low leakage blocking and load holding applications.

Materials

Cartridge:

Weight: 0.16 kg. (0.35 lbs.)
Steel with hardened work surfaces.
Zinc-plated exposed surfaces.
Buna N O-rings and polyester elastomer back-up standard.

Standard Ported Body:

Weight: 0.16 kg. (0.35 lbs.)
Anodized high-strength 6061 T6 aluminum alloy, rated to 207 bar (3000 psi).
Ductile iron bodies available; dimensions may differ.

Standard Coil:

Weight: 0.27 kg. (0.60 lbs.)
Unitized thermoplastic encapsulated.

Voltage	Hydraforce code	Article no.	Price £	Price €
CARTRIDGE VERSION				
24V DC	SV10-22-0-N-24DG	SV1022C24	£108.20	€129.90
110V AC	SV10-22-0-N-115AG	SV1022C115	£128.00	€153.60
220V AC	SV10-22-0-N-230AG	SV1022C230	£128.00	€153.60
INLINE WITH BODY 1/4" BSP				
24V DC	SV10-22-2B-N-24DG	SV10222B24	£147.00	€176.40
110V AC	SV10-22-2B-N-115AG	SV10222B110	£166.80	€200.10
220V AC	SV10-22-2B-N-230AG	SV10222B230	£166.80	€200.10
INLINE WITH BODY 3/8" BSP				
24V DC	SV10-22-3B-N-24DG	SV10223B24	£146.20	€175.40
110V AC	SV10-22-3B-N-115AG	SV10223B115	£165.90	€199.00
220V AC	SV10-22-3B-N-230AG	SV10223B230	£165.90	€199.00
INLINE WITH BODY 1/2" BSP				
24V DC	SV10-22-4B-N-24DG	SV10224B24	£146.20	€175.40
110V AC	SV10-22-4B-N-115AG	SV10224B115	£165.90	€199.00
220V AC	SV10-22-4B-N-230AG	SV10224B230	£165.90	€199.00

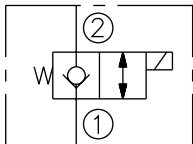
with nitril seals

WITH 'G' DIN CONNECTOR PLUG

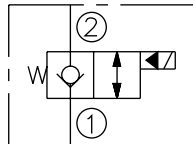
On request - Viton Seals - Screen filter protection - Manual Override
On request - For DC coils with spade or push on connections

Symbols

USASI:

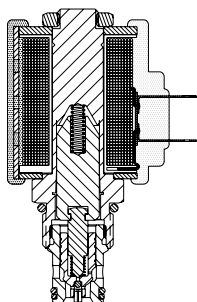
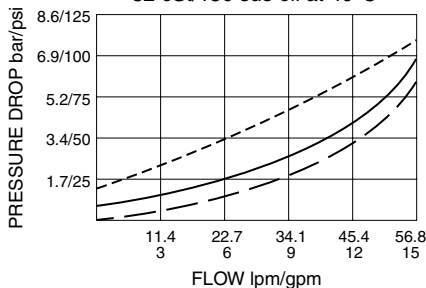


ISO:



Performance (Cartridge Only)

- ① to ② de-energized - - - -
 - ① to ② energized - - - -
 - ② to ① energized - - - -
- 32 cSt/150 sus oil at 40°C



Dimensions

