

## SV12-22

### 2 Way, Normally Closed, 207 BAR Rated

A solenoid-operated, 2-way, normally closed, poppet-type, screw-in hydraulic cartridge valve, designed to function as a load-holding or blocking valve in applications requiring low internal leakage.

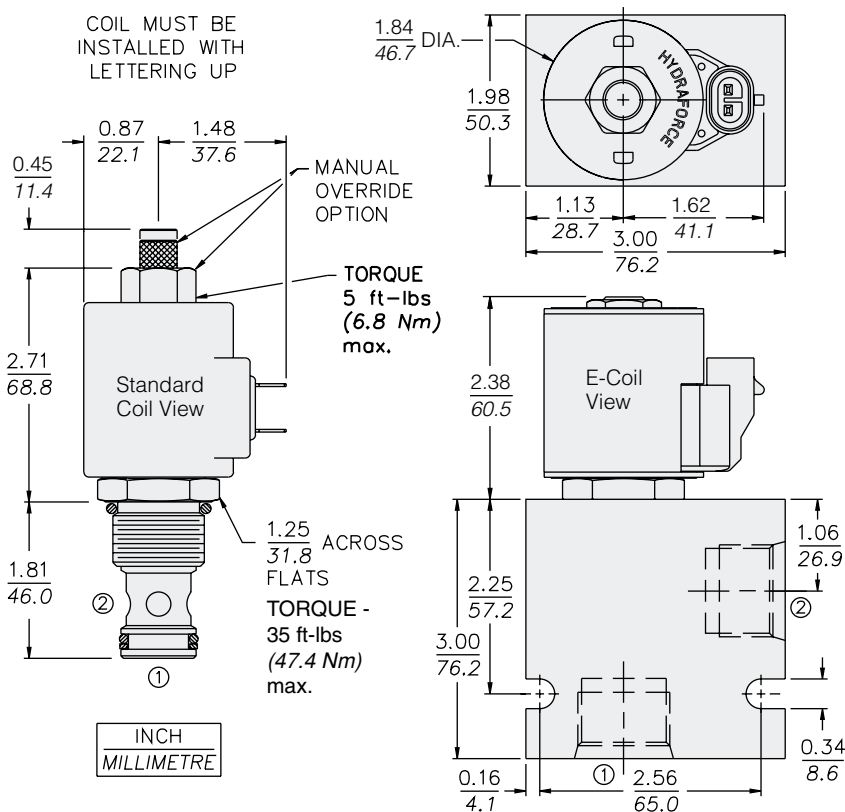
Voltage	Hydraforce code	Article no.	Price £	Price €
<b>CARTRIDGE VERSION</b>				
24V DC	SV12-22-0-N-24DG	<b>SV1222C24</b>	<b>£147.40</b>	<b>€176.90</b>
110V AC	SV12-22-0-N-115AG	<b>SV1222C115</b>	<b>£167.20</b>	<b>€200.60</b>
220V AC	SV12-22-0-N-230AG	<b>SV1222C230</b>	<b>£167.20</b>	<b>€200.60</b>
<b>INLINE WITH DUCTILE IRON BODY 3/4" BSP</b>				
24V DC	SV12-22-6B-N-24DG	<b>SV12226B24</b>	<b>£209.20</b>	<b>€251.00</b>
110V AC	SV12-22-6B-N-115AG	<b>SV12226B110</b>	<b>£229.00</b>	<b>€274.80</b>
220V AC	SV12-22-6B-N-230AG	<b>SV12226B230</b>	<b>£229.00</b>	<b>€274.80</b>
<b>INLINE WITH DUCTILE IRON BODY 1" BSP</b>				
24V DC	SV12-22-8B-N-24DG	<b>SV12228B24</b>	<b>£209.60</b>	<b>€251.50</b>
110V AC	SV12-22-8B-N-115AG	<b>SV12228B115</b>	<b>£229.40</b>	<b>€275.30</b>
220V AC	SV12-22-8B-N-230AG	<b>SV12228B230</b>	<b>£229.40</b>	<b>€275.30</b>

with polyurethane seals

WITH 'G' DIN CONNECTOR PLUG

On request - Viton Seals - Screen filter protection - Manual Override  
On request - For DC coils with spade or push on connections

### Dimensions



### Materials

#### Cartridge:

Weight: 0.25 kg. (0.55 lbs.)  
Steel with hardened work surfaces.  
Zinc-plated exposed surfaces.  
Buna N O-rings and polyester elastomer back-up standard.

#### Standard Ported Body:

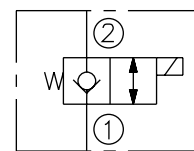
Weight: 0.57 kg. (1.25 lbs.)  
Anodized highstrength 6061 T6 aluminum alloy, rated to 207 bar (3000 psi).  
Ductile iron bodies available; dimensions may differ.

#### Standard Coil:

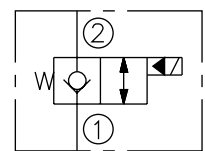
Weight: 0.27 kg. (0.60 lbs.)  
Unitized thermoplastic encapsulated.

### Symbols

#### USASI:



#### ISO:



### Performance (Cartridge Only)

