



SV16-20

2 Way, Normally closed, 207 BAR Rated

A solenoid-operated, 2-way, normally closed, poppet-type, screw-in hydraulic cartridge valve, designed to function as a load holding or blocking valve in applications requiring low internal leakage.

Materials

Cartridge:

Weight: 0.31 kg. (0.69 lbs.);
Steel with hardened work surfaces.
Zinc-plated exposed surfaces.
Buna N O-rings and polyester
elastomer back-up standard.

Standard Ported Body:

Weight: 0.57 kg. (1.25 lbs.);
Anodized high-strength 6061 T6
aluminum alloy, rated to 207 bar
(3000 psi).
Ductile iron bodies available;
dimensions may differ.

Standard Coil:

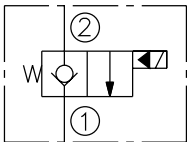
Weight: 0.27 kg. (0.60 lbs.)
Unitized thermoplastic encapsulated.

| Voltage | Hydraforce code | Article no. | Price £ | Price € |
|------------------------------------|--------------------|--------------------|----------------|----------------|
| CARTRIDGE VERSION | | | | |
| 24V DC | SV16-20-0-N-24DG | SV1620C24 | £162.40 | €194.80 |
| 110V AC | SV16-20-0-N-115AG | SV1620C115 | £182.10 | €218.60 |
| 220V AC | SV16-20-0-N-230AG | SV1620C230 | £182.10 | €218.60 |
| INLINE WITH BODY 3/4" BSP | | | | |
| 24V DC | SV16-20-6B-N-24DG | SV16206B24 | £224.10 | €269.00 |
| 110V AC | SV16-20-6B-N-115AG | SV16206B110 | £243.90 | €292.70 |
| 220V AC | SV16-20-6B-N-230AG | SV16206B230 | £243.90 | €292.70 |
| INLINE WITH BODY 1" BSP | | | | |
| 24V DC | SV16-20-8B-N-24DG | SV16208B24 | £222.50 | €267.00 |
| 110V AC | SV16-20-8B-N-115AG | SV16208B115 | £242.70 | €291.30 |
| 220V AC | SV16-20-8B-N-230AG | SV16208B230 | £242.70 | €291.30 |
| with nitril seals | | | | |
| WITH 'G' DIN CONNECTOR PLUG | | | | |

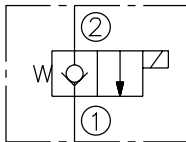
On request - Viton Seals - Screen filter protection - Manual Override
On request - For DC coils with spade or push on connections

Symbols

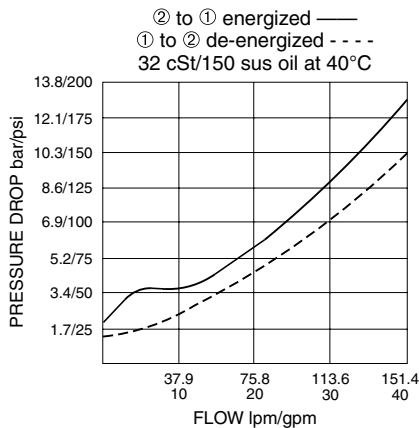
USASI:



ISO:



Performance (Cartridge Only)



Dimensions

